



australasian rehabilitation
outcomes centre

AROC Online Services (AOS) User Manual

*Version 5.0
(September 2014)*

FIM/WeeFIM (Facility Trainer)



Contents

Introduction	3
<i>Flow chart of AOS functionality.....</i>	3
<i>Computing requirements.....</i>	3
<i>Session time-out</i>	4
<i>Getting started with AOS.....</i>	4
Getting a FIM ID.....	4
Getting an AOS login.....	4
Logging into AOS.....	6
<i>Contacting AROC</i>	6
If you have an AOS username.....	6
If you have a FIM ID.....	6
If you do not have an AOS username of FIM ID	7
The AOS homepage	8
Returning to the AOS home page.....	8
<i>My Details</i>	8
Checking my FIM/WeeFIM status	9
Changing my password.....	9
<i>My Facility</i>	9
<i>Getting help in AOS</i>	9
Lodging a support ticket	10
<i>Logging out of AOS.....</i>	11
FIM/WeeFIM in AOS	12
<i>FIM/WeeFIM fundamentals</i>	12
Introducing AROC's FIM Team.....	12
What AROC needs from facilities?.....	12
Help us keep your records up to date	12
FIM/ WeeFIM Credentialing	13
Credentialing Levels.....	13
Master Trainers.....	14
Facility Trainers.....	14
FIM/WeeFIM Clinician	14
Re-credentialing Reminders	15
Credentialing Status Report	15
<i>Accessing the Online FIM/WeeFIM system</i>	15
Getting a FIM ID.....	15
Logging into AOS as a FIM/WeeFIM clinician or FIM/WeeFIM Facility Trainer.....	15
<i>Online Store</i>	17
<i>Manage Keys (facility trainers only).....</i>	20
Assigning Exams to Participants	21
Method 1 – using “Assign Keys To Participants” to assign exam	21
Method 2 – using the “SEARCH” button to assign exam	23
Emailing participants their assigned exams	24
Re-assigning exams.....	24
<i>My Exam Keys.....</i>	25

Flow for lifespan of a FIM/WeeFIM exam key.....	25
The FIM and WeeFIM Online Refresher Course	27
Navigating in the FIM Refresher Course	29
Sitting the FIM/WeeFIM Exam	30
Pausing and resuming the online FIM/WeeFIM exam.....	32
Completing the online FIM/WeeFIM exam	32
Your FIM/WeeFIM Credentialing Certificate	33
<i>FIM/WeeFIM credentialing reports (facility trainers only)</i>	35
Generating a credentialing report in AOS	35
<i>FIM/WeeFIM Workshops</i>	36
Types of FIM/WeeFIM Training Workshops	36
FIM/WeeFIM training workshop hosted by a facility	36
FIM/WeeFIM training workshop hosted by AROC.....	37
FIM Facility Trainers Workshop Hosted by AROC	37
Organising or attending a workshop	37
Cost of workshops	37
Checklists	38
Check List for Facility Trainers Running Workshops at their own facility	38
Check List for Facility Trainers Requesting a Master Trainer Workshop at their Facility	38
Evaluation	39
Finance	39

Introduction

AROC Online Services (AOS) is a secure, web-based service that enables staff of AROC member facilities to manage their facility's AROC data, their personal details and FIM/WeeFIM credentialing status.

AOS is intended for:

- Staff involved in the data entry or data upload of AROC data
- Staff responsible for downloading and reviewing AROC benchmarking reports
- Staff wanting to extract and analyse their facility's data
- Staff needing to become credentialed/re-credentialed in FIM/WeeFIM
- Staff planning on sitting the online FIM/WeeFIM refresher course
- Staff intending on purchasing/managing FIM/WeeFIM keys and resources.

Facilities can opt to have one or many of their staff registered to use AOS and are responsible for ensuring that no unauthorised staff gains access to AOS.

This user manual provides AROC members with detailed instructions on how to use the functions available within AOS.

Flow chart of AOS functionality

The flow chart presented in Figure 1 provides a quick reference to all the functions available from the AOS menu and demonstrates the pathways of entry into the system:

- A) AOS Login
- B) FIM ID

Each function listed in the flow chart is explained in detail within this document.

This manual is available online at from both the AROC Homepage (AROC Online Services ... AOS and FIM User Manuals) and from all AOS Menus (Help ... User Manual) and can be downloaded as a complete document or by chapter.

Computing requirements

To access AOS users will need:

- An AOS username and password or FIM ID (page 4)
- Internet connectivity
- A standard internet browser with pop-ups, browser scripting and cookies enabled
- Adobe Acrobat reader to view or open PDF files.

The recommended browsers are:

- Internet Explorer 8.0+
- Mozilla Firefox
- Google Chrome
- Safari

The recommended screen resolution is 1024 x 768.

Session time-out

To maintain security AOS sessions, including data entry and FIM/WeeFIM online exam, will automatically time out if inactive for periods of 30 minutes or more. If in the middle of a data entry tab or an exam, the user will lose any unsaved data or exam progress. An error message will appear indicating the session has timed out and the user will be returned to the AOS login screen.

Getting started with AOS

To access AOS users require either an AOS username and password (AOS login) or a FIM ID. FIM and WeeFIM clinicians wishing to purchase an exam key and/or sit an exam (with or without the refresher course) can access this limited functionality of the online FIM system within AOS by logging in with their FIM ID. For full online FIM system functionality or access to other AOS functions (such as data entry and data upload) users of AOS require an AOS login.

Getting a FIM ID

A FIM ID is a unique and unchanging identifier assigned to each individual FIM/WeeFIM clinician known to AROC.

The FIM ID is provided on your FIM/WeeFIM credentialing certificate. If you cannot locate your FIM ID, please ask your facility trainer, who will have the latest credentialing status report, listing all FIM/WeeFIM clinicians and their FIM IDs. If the facility trainer cannot locate it either, please email fim@uow.edu.au and include your name, facility, email address and the date you last completed the FIM/WeeFIM exam.

If you are new to FIM/WeeFIM and are booked to participate in a workshop, you will receive your FIM ID and instructions about how to access the FIM/WeeFIM online system via email shortly after the workshop, for more detail, see page 15.

Getting an AOS login

If you require an AOS username and password please email AROC at aroc@uow.edu.au, and provide the following details:

- your name
- facility role
- facility name*
- email address*
- your telephone number at this facility*

**If you work at more than one facility please clearly state each facility along with your role and telephone number at each.*

A unique AROC username and password will be provided to you by email. Your username and password will be case-sensitive so it is best to copy and paste from the email sent to you by AROC to your internet browser. When you first log in to AOS you will be prompted to change your password.

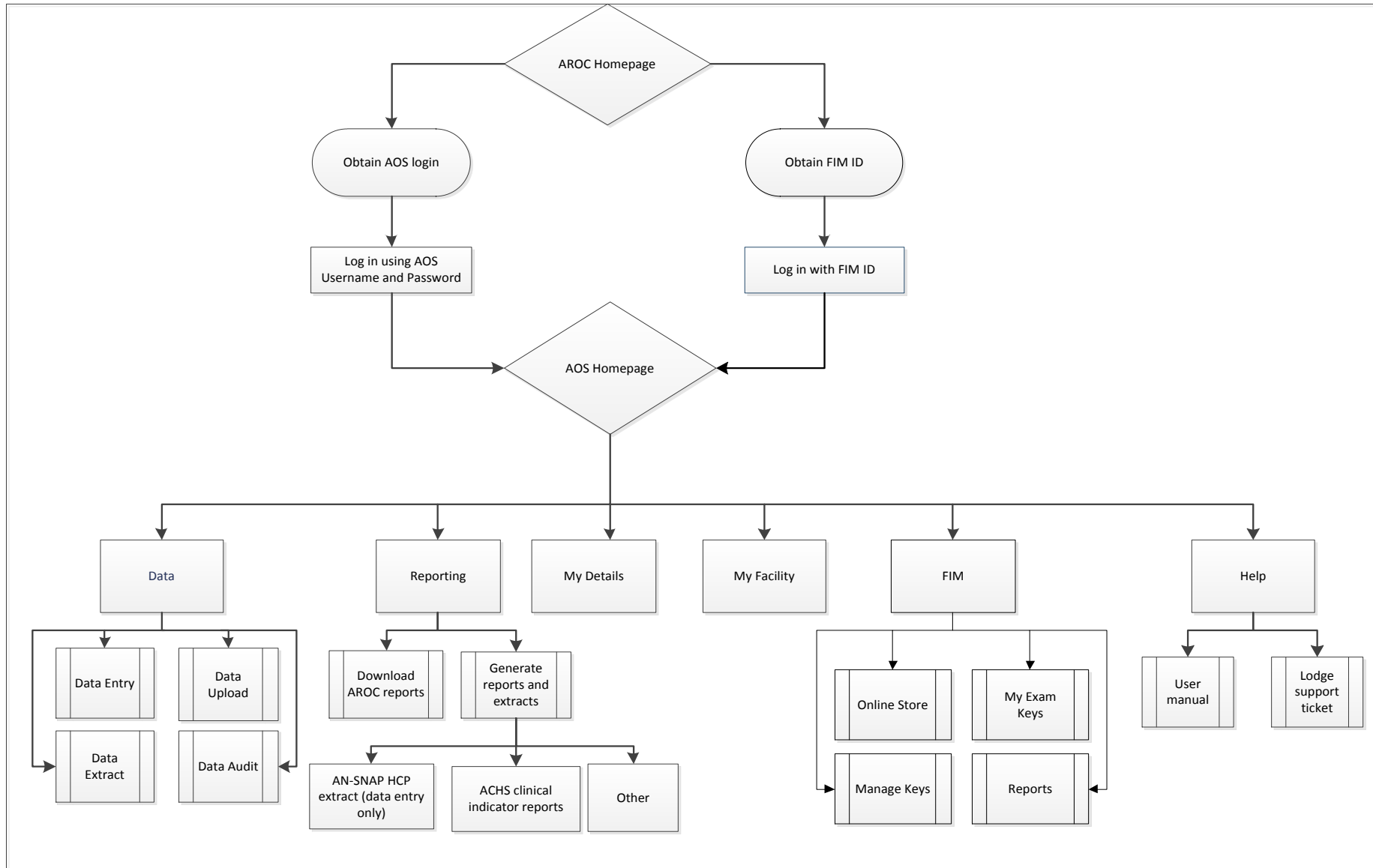


Figure 1: AOS flow chart

Logging into AOS

- 1) Log into AOS from the AROC homepage <http://ahsri.uow.edu.au/aroc> (Figure 2).
- 2) Once the Login screen has opened (Figure 3), choose from “AOS LOGIN” or “FIM LOGIN”.
 - a. To log into AOS using the AOS login enter “Username” and “Password” in the corresponding fields and click “Log In to AOS”.
 - b. To log into AOS using the FIM login enter your “FIM ID” in the corresponding field and click “Log In to FIM”.

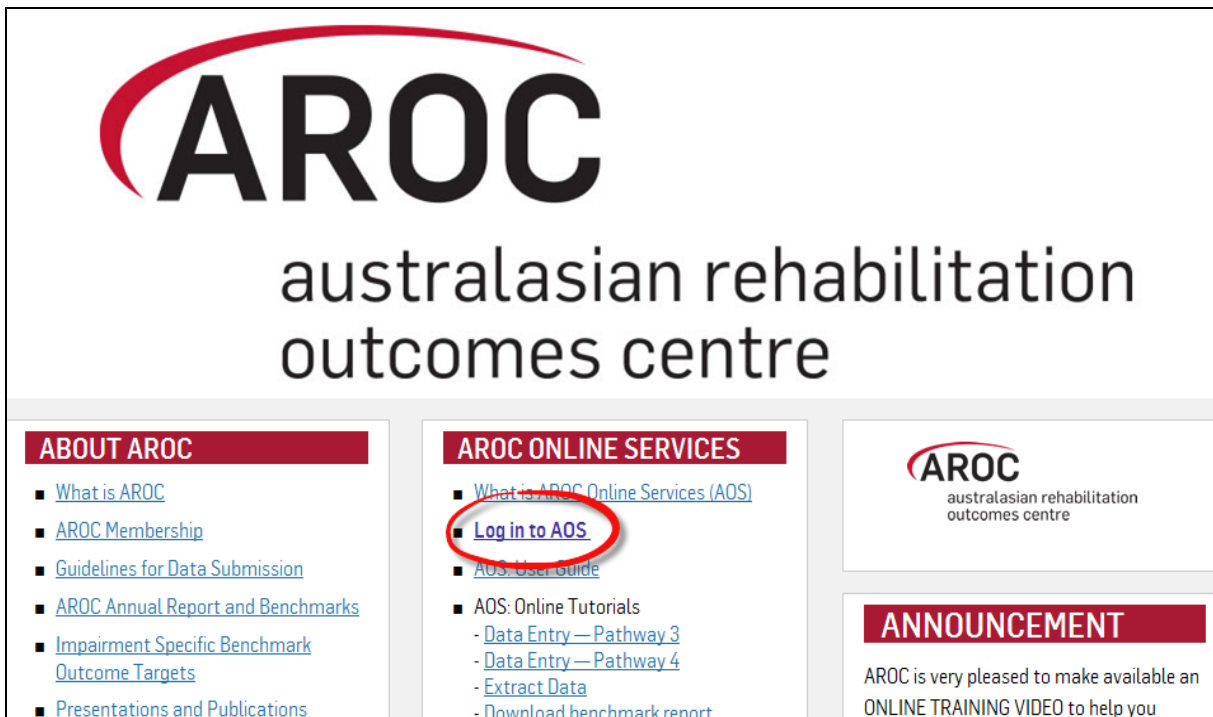


Figure 2: Location of AOS Log in on AROC Website

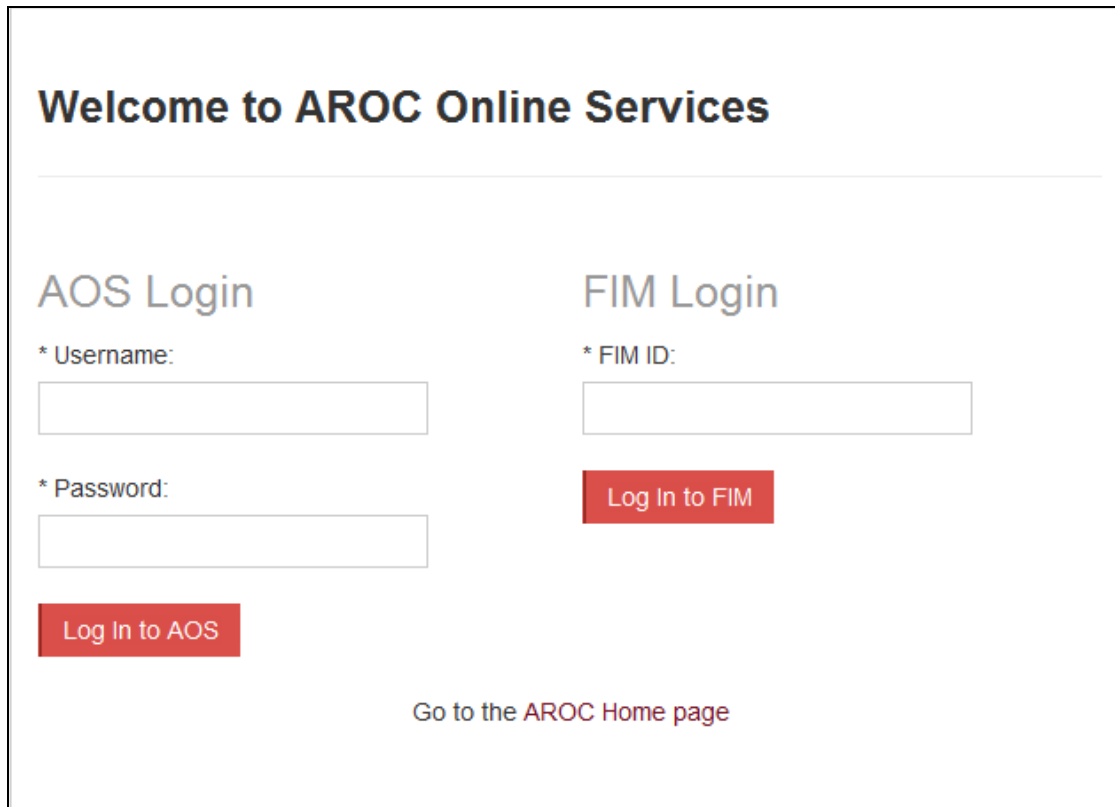
Contacting AROC

If you have an AOS username

For any general AROC questions or queries related to functions within AOS please contact AROC using the AOS Menu: HELP → Lodge Support Ticket (page 10). If your query relates to an inability to login, please email aroc@uow.edu.au. For information related to FIM, workshop organisation, clinical queries or invoicing queries please email fim@uow.edu.au.

If you have a FIM ID

For information related to FIM, workshop organisation, clinical queries or invoicing queries please email fim@uow.edu.au.



Welcome to AROC Online Services

AOS Login

* Username:

* Password:

Log In to AOS

FIM Login

* FIM ID:

Log In to FIM

[Go to the AROC Home page](#)

Figure 3: AOS Login screen

If you do not have an AOS username or FIM ID

For any general AROC questions or access requests to AOS please email aroc@uow.edu.au.
For information related to FIM, workshop organisation, clinical queries or invoicing queries please email fim@uow.edu.au.

The AOS homepage

After logging in the AOS homepage (Figure 4) will open. The AOS home page provides the latest news about AOS and AROC and a list of available functions. If access to additional functions is required please email AROC at aroc@uow.edu.au.

Depending on the user's level of access, the functions available may include:

- My Details
- My Facility
- Data Entry
- Data Upload
- Data Extract
- Data Audit
- Reporting
- FIM Online Store
- FIM My Exam Keys
- FIM Manage Keys
- Help

Returning to the AOS home page

Clicking on the AROC logo on the top left corner of the screen will exit the function the user is in and return them to the AOS homepage.

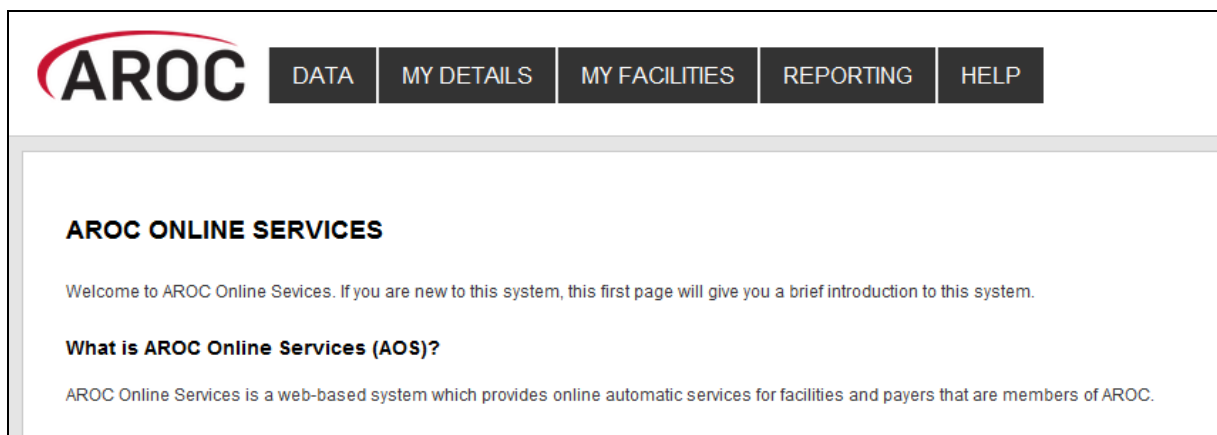


Figure 4: AOS homepage

My Details

This menu option allows users to view their profile. Users are able to edit certain details by clicking on "Edit" under "Quick Links" on the left hand side. We encourage users to keep their details as up to date as possible.

Users are unable to update details in greyed out fields. These include:

- Contact Person Details
- AOS Login
- Credentialing

If you need to change any of these details, please lodge a support ticket, which can be found in the "Help" menu option.

Checking my FIM/WeeFIM status

If you are FIM/WeeFIM credentialed you can view your FIM ID and exam results, including when your FIM certification expires via “My Details”. If you believe these details are not correct please lodge a support ticket (refer to page 10).

Changing my password

In the AOS login section click “Change Password” (Figure 5). The Change Password screen will appear.

My Facility

This menu option shows users which facility or facilities their AROC account is associated with (Figure 6). This option is read-only and users will not be able to edit the facilities they are listed against or details recorded for a facility. If the facility or list of facilities is incorrect please lodge a support ticket (refer to page 10).

Getting help in AOS

The HELP menu (Figure 7) is always available during an AOS session and has two options:

- **USER MANUAL:** this links to the AROC documentation page relevant to the system currently being accessed – a PDF of the User Manual and Quick Reference Guide relevant to this system are located here. The online data dictionary is also accessible here. This should be the first port of call for help. This page will be continually updated so it is worth bookmarking.
- **LOGDE SUPPORT TICKET:** If you are unable to find an answer to what you need within the online documentation you should lodge a support ticket (page 10).

Miss ENTRY, Data			
CONTACT DETAILS			
Title: Miss	First Name: data	Last Name: entry	(Preferred Name: N/A)
Contact Person Contact Details			
Phone: 4221 4356	Mobile: 0412 7777 50	Fax: N/A	
Email: data_entry@noemail.net	Website: N/A		
Contact Physical Address Details			
Contact PoBox Address Details			
AOS LOGIN			
Login Name: data_entry	Archived: Not Archived	Change Password	

Figure 5: Changing password in “My Details” screen

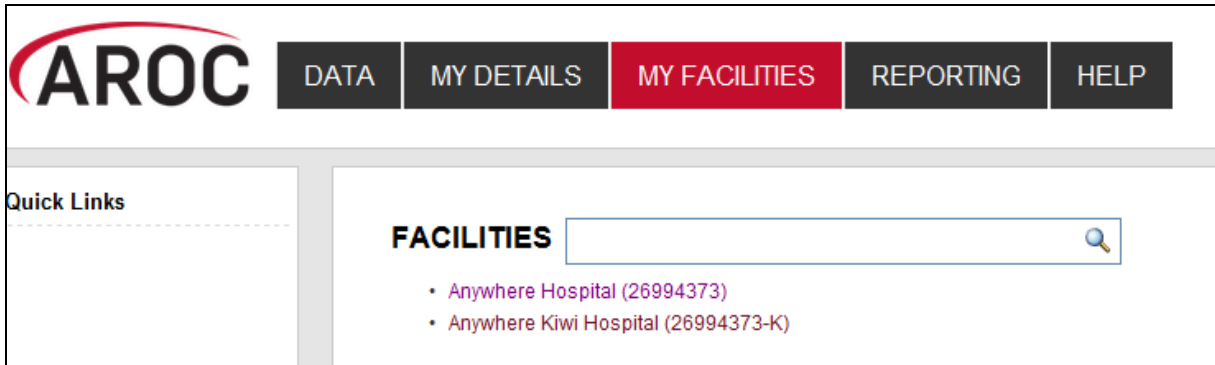


Figure 6: My Facilities Screen

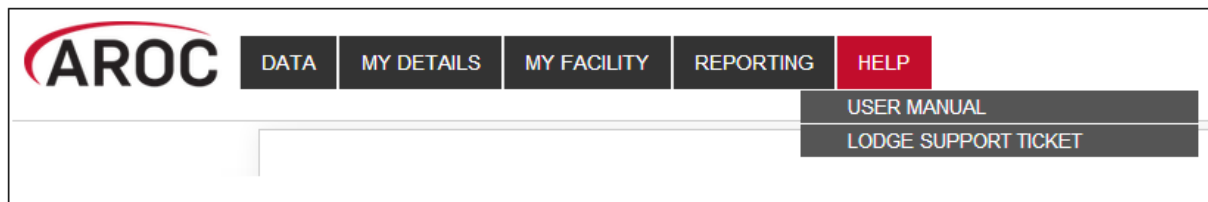


Figure 7: Help menu

Lodging a support ticket

From all systems within AOS users can send AROC a message asking for support by clicking HELP ... LODGE SUPPORT TICKET. After selecting this option a pop up screen titled “Lodge a support ticket” will appear (Figure 8).

NOTE: if the support ticket window does not appear, check that pop ups are enabled in your browser

Some items may pre-fill, based on the account you are logged in as. Please fill out all the other items where you can before submitting, otherwise, we may not be able to get back to you.

- Summary – This is a summary of your issue, think of it like a subject line in an email.
- Description – This is the overall description of the issue you are having.
- Attach file – If you have a file that is relevant to the issue, attach it here. Files that may be useful are screenshots of your issue, or a data file that is causing the issue.
- Component/s – This is where you will select what area of AOS you are having an issue with.
- Organisation – This is where you will select what facility or area you are representing with respect to this issue
- Name – Your name
- Email – Your email address

Lodge a support ticket

i Please provide your feedback below detailing what your issue is and attaching any relevant files (for example, a screenshot).
Please provide your organisation details (facility, area or payer), your name and your email address so that we can get back to you regarding this issue.
Without these details we will not be able get back to you.

Summary*

Description

Attach file No file chosen

Component/s*
Start typing to get a list of possible matches or press down to select.

Organisation*

Facility / Organisation

Name

Email

Figure 8: Lodge a support ticket

Logging out of AOS

Clicking on the “Logout” button in red at the top right corner of the screen will log users out of their AOS session and re-direct them to the AROC homepage.

FIM/WeeFIM in AOS

In the recent upgrade of AROC Online Services (AOS) extra FIM functionality is now available.

FIM/WeeFIM Clinicians can now:

- Order and pay for a FIM/WeeFIM exam for themselves
- Order and pay for a FIM/WeeFIM Manual for themselves (manual will still be sent via normal post)
- Order and pay for a FIM/WeeFIM Online Refresher Course (which includes an exam key) for themselves
- Sit the online exam and receive their results and credentialing certificate (if they pass)
- Will be automatically notified that their FIM/WeeFIM exam is about to expire
- Will be automatically notified that their credentialing is about to expire

FIM/WeeFIM Facility Trainers can now:

- Order, pay for and receive FIM/WeeFIM exams for their workshop participants
- Order and pay for FIM/WeeFIM Manuals for their workshop participants (manuals will still be sent via normal post)
- Assign exams to participants at their facility. Assignment of an exam will trigger an email to be sent to the assigned person with details of how to access the online exam
- Manage the assignment, or re-assignment if necessary of all exams they have purchased
- Review the status of all exams they have purchased (assigned, not yet assigned, activated, completed, expired, etc)
- View the exam results of participants
- Generate a credentialing report for staff at their facility at any time

Note: Facility Trainers whose credentialing has lapsed will only have FIM/WeeFIM Clinician access privileges

FIM/WeeFIM fundamentals

Introducing AROC's FIM Team

The Australasian Rehabilitation Outcomes Centre aims to effectively and efficiently administer the training and use of the FIM/WeeFIM within Australia and NZ. To achieve this several staff members are dedicated to assist with any need that may arise. Table 1 lists AROC staff and their FIM roles. Should you need assistance in any of these areas please email the appropriate person and they will be happy to help.

What AROC needs from facilities?

If AROC is going to achieve its aim of making the administration of FIM/WeeFIM as efficient as possible, it needs the help of individuals and facilities alike.

Help us keep your records up to date

The distribution of FIM/WeeFIM information relies on having correct contact information, for this reason it is imperative that details are kept up to date, please keep your own details

as current as possible in the system (refer to My Details on page 8). This refers to changes like:

- Changes of name e.g. where a staff member has married
- Change of role within the facility
- email address, phone number changes

Note: Changes to certain details, for example name, are not possible for users to do themselves, a support ticket must be lodged, refer to page 10.

Please advise AROC of any staff who are longer at your facility and we will remove their contact details from your facility stored in our system.

Table 1: The FIM Team

Member	Designated FIM Role	Contact Details
Frances Simmonds	AROC Director Overall management of FIM administration	Email: aroc@uow.edu.au
Niki Panteli	FIM Manager <ul style="list-style-type: none"> • Workshop Organisation • Credentialing Queries • Exams & Resources • Invoicing 	Tel: 02 4221 5282 Email: fim@uow.edu.au
	<ul style="list-style-type: none"> • Clinical questions Please refer to this email address in the first instance, you query will be filtered to the correct contact.	Email: fim@uow.edu.au

FIM/ WeeFIM Credentialing

To become credentialed you must pass the FIM/WeeFIM online credentialing exam. It is recommended that clinicians are competent in FIM scoring before attempting the exam. Competence will result from training, revision and practical experience.

To gain access to the online exam you, your Facility Trainer or FIM Facility Coordinator on your behalf, will need to purchase a FIM/WeeFIM Exam (refer to the Online Store on page 17). Credentialed status lasts for 2 years, after which candidates must re-sit the exam if they wish to remain credentialed.

Credentialing Levels

There are three levels of FIM/WeeFIM credentialing:

- Master Trainer
- Facility Trainer
- FIM Clinician

The attainment of each level has different requirements.

Master Trainers

Individuals are invited by AROC to become Master Trainers. Master Trainers are contracted to AROC and train outside their facility for payment, but within their facility they act as Facility Trainers and training is done as part of their normal paid time. Master Trainers train in all facilities (public and private) and conduct FIM or WeeFIM Clinician Workshops and some also conduct Facility Trainer workshops for prospective FIM/WeeFIM Facility Trainers. Master Trainers have extensive experience with the FIM/WeeFIM and with training others how to administer it. The initial and ongoing criteria for Master Trainers are listed in Table 2.

Table 2: Initial and Ongoing Criteria for Master Trainers

<ul style="list-style-type: none"> ▪ Invited to become a Master Trainer by AROC Contracted to AROC
<ul style="list-style-type: none"> ▪ Have 5 yrs experience using the FIM tool and maintain current credentialing during that period
<ul style="list-style-type: none"> ▪ Have 3 yrs experience as a Facility Trainer with evidence of training
<ul style="list-style-type: none"> ▪ Meet a set of standard competencies
<ul style="list-style-type: none"> ▪ Be reviewed by a current Master Trainer
<ul style="list-style-type: none"> ▪ Have taken measures to maintain clinical currency
<ul style="list-style-type: none"> ▪ Satisfy a peer evaluation every 4 years

Facility Trainers

Facility Trainers train staff within their facility, as part of their job description, in their normal paid time (i.e. not as an independent contractor). The initial and ongoing criteria for Facility Trainers are listed in Table 3.

Table 3: Initial and Ongoing Criteria for Facility Trainers

Initial	Ongoing
<ul style="list-style-type: none"> ▪ Be trained in FIM or WeeFIM scoring by a Master trainer ▪ Have current credentialing status ▪ Pass the most recent credentialing exam to at least 85+% ▪ Have 3+ years experience using the FIM/WeeFIM tool as a credentialed FIM clinician and be prepared to actively participate in training staff ▪ Must be supported by employer ▪ Have a training qualification or relevant experience ▪ Have attended a FIM Facility Trainer Workshop 	<ul style="list-style-type: none"> ▪ Conduct at least 1 workshop/year ▪ Undertake a Facility Trainer refresher course run by a FIM Master Trainer at least every 4 years ▪ Pass the exam at 85+% every 2 years ▪ Submit to AROC the workshop evaluation forms completed by participants after each workshop (as per the Facility Trainer User Manual)

FIM/WeeFIM Clinician

Clinicians use the FIM/WeeFIM tool within their facility in their paid time. The initial and ongoing criteria for clinicians are listed in Table 4.

Table 4: Initial and Ongoing Criteria for FIM/WeeFIM Clinicians

Initial	Ongoing
<ul style="list-style-type: none"> ▪ Passed the credentialing exam with 80%+ 	<ul style="list-style-type: none"> ▪ Pass the exam at 80+ every 2 years ▪ Undertake a refresher course at least every 4 years

Re-credentialing Reminders

Credentialing lasts two years. AROC will send you a reminder one month before your credentialing is about to expire, notifying you that your credentialing is about to expire and reminding you to re-sit the exam to maintain your credentialed status.

Credentialing Status Report

Facility Trainers and Facility Co-ordinators can generate a FIM Credentialing Status report for their facility at any time. In addition AROC is working on providing functionality that will allow you to choose for an automated FIM Credentialing Status report to be sent to you by email monthly (refer to FIM/WeeFIM credentialing reports on page 35).

Accessing the Online FIM/WeeFIM system

Getting a FIM ID

A FIM ID is a unique and unchanging identifier assigned to each individual FIM/WeeFIM clinician known to AROC.

The FIM ID is provided on your FIM/WeeFIM credentialing certificate. If you cannot locate your FIM ID, please ask your facility trainer, who will have the latest credentialing status report, listing all FIM/WeeFIM clinicians and their FIM IDs. If the facility trainer cannot locate it either, please email fim@uow.edu.au and include your name, facility, email address and the date you last completed the FIM/WeeFIM exam.

If you are new to FIM/WeeFIM and are booked to participate in a workshop, you will receive your FIM ID and instructions about how to access the FIM/WeeFIM online system via email shortly after the workshop.

Logging into AOS as a FIM/WeeFIM clinician or FIM/WeeFIM Facility Trainer

- 1) Log into AOS from the AROC homepage <http://ahsri.uow.edu.au/aroc> (refer to Figure 2 on page 6).
- 2) Once the Login screen has opened (Figure 9), choose from “AOS LOGIN” or “FIM LOGIN”.
 - a. **If you are a FIM/WeeFIM trainer or coordinator:** log into AOS using the AOS login – enter your “Username” and “Password” in the corresponding fields and click “Log In to AOS”.
 - b. **If you are a FIM/WeeFIM clinician:** log into AOS using the FIM login – enter your “FIM ID” in the corresponding field and click “Log In to FIM”.

If you are a facility trainer you are required to login to AOS using your username and password (refer to page 4 for how to obtain an AOS login) to view and manage keys, generate reports and assign keys. As a facility trainer you can also log in using your FIM ID, however logging in this way will provide you with only limited access to FIM functions.

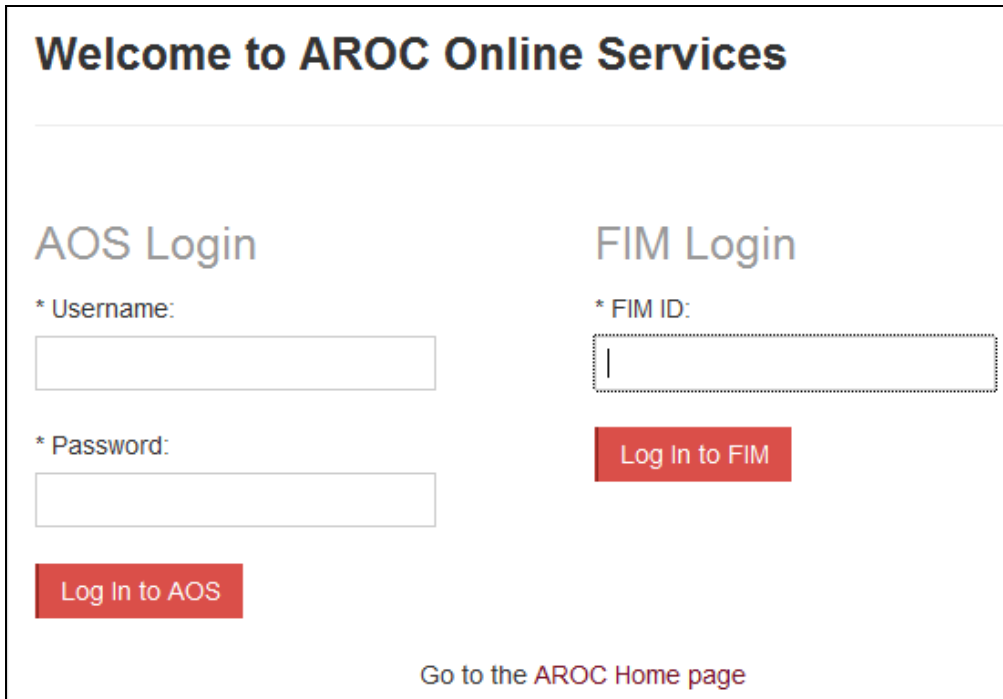


Figure 9: FIM Login

Once you login the AOS Home Page will appear. The FIM system will know whether you are a FIM and/or WeeFIM Clinician, Facility Trainer or Master Trainer as well as the facility(s) you work for.

FIM/WeeFIM Clinicians have the following menu options available in AOS (Figure 10):

- **MY DETAILS** – this is where you can amend your personal details to ensure AROC has the most current information (refer to My Details on page 8)
- **FIM ... ONLINE STORE** – this is where you can purchase exam keys, manuals and/or an online FIM/WeeFIM refresher course (refer to Online Store on page 17)
- **FIM ... MY EXAM KEYS** – this section provides details of any current or used exam keys you have (refer to My Exam Keys on page 25)
- **HELP** – this is where you go to get help (refer to Getting help in AOS on page 9)

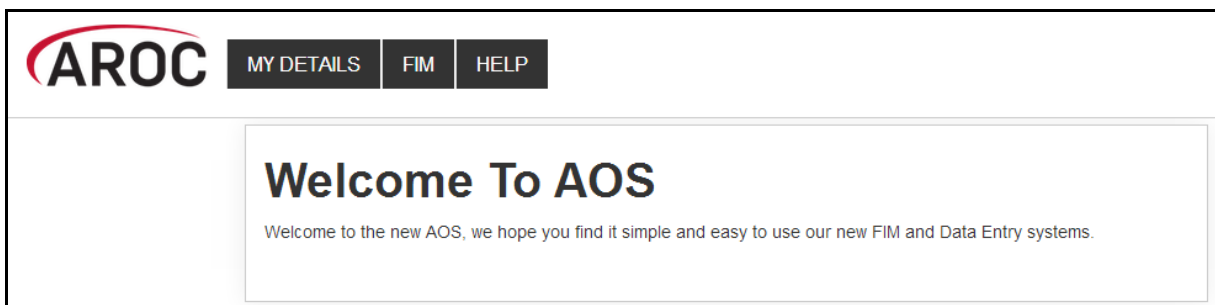


Figure 10: FIM/WeeFIM clinician AOS menu options

Facility Trainers have the following menu options available in AOS (Figure 11):

- **MY DETAILS** – this is where you can amend your personal details to ensure AROC has the most current information (refer to My Details on page 8)
- **MY FACILITY** – this is where you can amend your personal details to ensure AROC has the most current information (refer to My Facility on page 9)
- **FIM ... ONLINE STORE** – this is where you can purchase exam keys, manuals and/or an online FIM/WeeFIM refresher course (refer to Online Store on page 17)
- **FIM ... MY EXAM KEYS** – this section provides details of any current or used exam keys you have (refer to My Exam Keys on page 25)
- **FIM ... MANAGE KEYS** – this is where you manage the keys you have purchased for your workshop participants (refer to Manage Keys (facility trainers only) on page 20)
- **FIM ... REPORTS** – this is where you can generate a FIM/WeeFIM credentialing report for your facility(s) (refer Generating a credentialing report in AOS on page 35)
- **HELP** – this is where you go to get help (refer to Getting help in AOS on page 9)

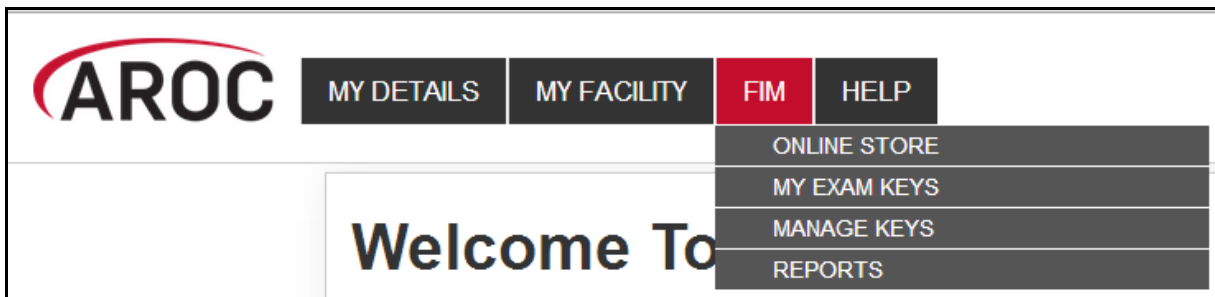


Figure 11: Facility trainer AOS menu options

Online Store

This service enables users to purchase Exam Keys, Manuals or an Online Refresher Course.

- 1) Click on “ONLINE STORE” from the FIM menu (Figure 12)

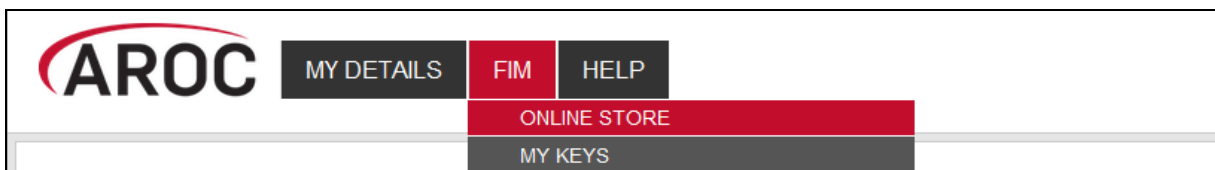


Figure 12: Online Store

- 2) Check the boxes next to the product(s) to purchase (Figure 13)

Notes:

- For FIM/WeeFIM clinicians quantity will automatically default to “1” each time a product is ticked
- Purchasing multiple exams/manuals is only available to Facility Trainers

- 3) Click on “CONTINUE”

Note: To clear ticks, click on “START NEW ORDER”

aroc
Australasian Rehabilitation Outcomes Centre

AUSTRALASIAN REHABILITATION OUTCOMES CENTRE

Step 1 - Select products

Please select the products you would like to order

	Cost	Quantity
Keys (Place your cursor over the product title for a full description)		
<input checked="" type="checkbox"/> FIM Exam Key	\$35.00	1
<input type="checkbox"/> WeeFIM Exam Key	\$35.00	0
Refresher Course (Place your cursor over the product title for a full description)		
<input checked="" type="checkbox"/> FIM - Online Refresher with Exam Key	\$70.00	1
<input type="checkbox"/> WeeFIM - Online Refre. <small>This is a key to the online refresh course + exam key for previously credentialed FIM clinicians</small>	\$70.00	0
Manual (Place your cursor over the product title for a full description)		
<input checked="" type="checkbox"/> FIM Training Manual	\$25.00	1
<input type="checkbox"/> WeeFIM Training Manual	\$25.00	0
		Subtotal \$130.00 GST Exclusive

[START NEW ORDER](#) [CONTINUE >>](#)

Figure 13: Purchasing FIM/WeeFIM products

4) Enter contact details (Figure 14).

aroc
Australasian Rehabilitation Outcomes Centre

AUSTRALASIAN REHABILITATION OUTCOMES CENTRE

Step 2 - Contact details

Enter your details

Title *	Select your title	Organisation	
First name *		Surname *	
Delivery Address			
Line One*			
Line Two			
Suburb / Town *		State *	Select State
Postcode *		Country *	Australia
Phone number *		Fax	
Email *			
Delivery Type	Standard		

Is your invoice address the same as your delivery address? * Yes No

[START NEW ORDER](#) [<< BACK](#) [CONTINUE >>](#)

Figure 14: Contact details

5) The Payment Screen will appear (Figure 15)

6) Click on payment method:

- **Credit card** - resources will be forwarded immediately
- **Direct Debit** – payment into the University of Wollongong’s bank account - goods will be forwarded once AROC has confirmation of the deposit into the University’s bank. (Please email your receipt/reference number to fim@uow.edu.au)
- **Invoice/PO** - we require you to provide us with a copy of a valid Purchase Order (PO). The resources will be dispatched after the PO is received by AROC

Note: It is mandatory to tick the box indicating agreement to the terms and conditions of the online ordering system. Failure to do this will prevent the user from moving through to the next step.

Figure 15: Payment

7) Review payment and order details and click on “Continue”

8) Review “order summary” (Figure 16) and choose to:

- START NEW ORDER
- PRINT THIS PAGE
- Go “BACK TO FIM SYSTEM”

An email confirming purchase will be sent to user’s nominated email account.

Order Summary

Your order is almost complete. You have indicated you would like to pay via Direct Debit.

Direct Debit Information Payment can be made by electronic funds transfer bank to bank directly into the UOW bank account.

Bank: National Australia Bank
BSB: 082 886
Account name: University of Wollongong
Account number: 0381 10002

Please include your transfer description "AROC" and your FIM ID (e.g. 'AROC1100009X'). If email notification of the transfer is available, please use the email fim@uow.edu.au.

Products will be dispatched once AROC has received confirmation that the funds have been deposited into the University of Wollongong bank account. This may take up to 5 working days.

Order number	0001415	Date	25 June 2014
Contact	Ms test test	Organisation	
Phone	11112456	Fax	
Email	test@test.au		

Your order:

1 x KOTFIM - FIM - Online Refresher with Exam Key @ \$70.00	\$70.00
1 x FIM Training Manual @ \$25.00	\$25.00
1 x KFIM - FIM Exam Key @ \$35.00	\$35.00
	Subtotal \$143.00
Postage & Handling	\$10.00
Order total \$153.00 GST Included	

[PLACE NEW ORDER](#)
[PRINT THIS PAGE](#)
[BACK TO FIM SYSTEM](#)

Figure 16: Order summary

Manage Keys (facility trainers only)

This functionality is only available to Facility Trainers and allows them to assign Keys to staff within their facility. This service is only accessible by a Facility Trainer logging into AOS using their AOS username and password (refer page 4).

The FIM system allows Facility Trainers to:

- Assign exams to participants. Assignment will trigger an email to be sent to the assigned participant with instructions of how to sit the exam.
- Manage the assignment, or re-assignment, of exams they have purchased
- Review the status of exams they have purchased (assigned, not yet assigned, used, expired, etc)
- View exam results of participants they have assigned exams to.

Assigning Exams to Participants

You can only assign one exam to each participant. If you attempt to assign an exam to a participant that already has an exam assigned to them, an error message will be displayed.

There are 2 ways to assign exams to participants.

Method 1 – using “Assign Keys To Participants” to assign exam

1. Click on “Manage Keys” from the FIM Menu (Figure 17). The Manage Keys screen will appear
2. Select the facility you would like to assign exams for using the drop down list. You can also filter using any of the parameters available on the screen; e.g. Exam (key) ID, Status of the exam, Assigned status, Participant name, etc

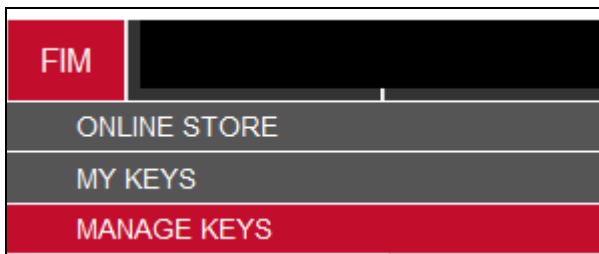


Figure 17: Manage keys

3. Click Assign Keys To Participant (Figure 18).

The screenshot shows the 'Manage Keys' interface. At the top, there are several filter fields: 'Type' (All), 'Status' (All), 'Issued from' (range), 'Expiring in' (Days), 'Assigned Status' (All), and 'Assigned from' (range). Below these are fields for 'Purchaser Name', 'Participant Name', 'Participant FIM ID', and 'Facility' (All). There are 'Search' and 'Reset' buttons. Below the filters, there is a section titled 'Assign Keys To Participants' with a search box. At the bottom, there is a table with columns: Facility, Product, Purchaser, Participant, Status, Expiry, Result, and Actions. The table currently displays 'No data available in table'.

Figure 18: Manage Keys – Search Screen

The Assign Exams To Participants screen will appear. This screen displays a table listing all unassigned exams. Details for each exam are displayed in rows. The table shows the exam ID, Status, Facility and Participant. You can display assigned exams (as well as unassigned) by clicking on the “Show Assigned Keys As Well” tab in blue just above the table.

- To assign an exam to a participant, click “Assign Participant” on the far right of the exam you wish to assign.

Assign Keys To Participants

Click the **Assign FimParticipant** link to open a window where you can search for a FimParticipant to assign or create a new FimParticipant to assign.
Note: To select a key to be emailed, click anywhere on the key in the table below to select it. To unselect a selected key, just click again.

[Show Assigned Keys As Well](#) [Email Selected Keys to Participants](#)

Key id	Status	Facility	Participant
359b30a83402c176	Purchased	Wollongong Hospital	Assign Participant
4ae4c5039e3522db	Purchased	Wollongong Hospital	Assign Participant
93a13332386122db	Purchased	Wollongong Hospital	Assign Participant
c340be6d2dc4c176	Purchased	Wollongong Hospital	Assign Participant
cf1288c862a5351c	Purchased	Wollongong Hospital	Assign Participant
de29405aa2c9e5a5	Purchased	Wollongong Hospital	Assign Participant

Figure 19: Selecting the Key to Assign

The Assign Participant screen will appear (Figure 20).

Assign FimParticipant
✕

Assign existing FimParticipant

Search for a FimParticipant to assign from existing AOS contacts

FIM ID	First Name	Last Name	Email	
<input type="text" value="100418k"/>	<input type="text"/>	<input type="text"/>	<input type="text"/>	<input type="button" value="Search"/>

Figure 20: Assign Keys to Individual

5. You can now search the FIM system for the participant you would like to assign the exam to. You can search by FIM ID, First Name, Last Name or Email or a combination of these. Click “Search” (Figure 21).

Assign FimParticipant
✕

The key was successfully assigned to Example Clinician.

Assign existing FimParticipant

Search for a FimParticipant to assign from existing AOS contacts

FIM ID	First Name	Last Name	Email	
<input type="text" value="1400418K"/>	<input type="text"/>	<input type="text"/>	<input type="text"/>	<input type="button" value="Search"/>

The following contacts have been found that match the search.

	FIM ID	First Name	Last Name	Email
<input checked="" type="radio"/>	1400418K	Example	Clinician	example@noemail.net

Figure 21: Assign Keys to Individual 2

6. A list of all participants with matching details will appear. Select the participant you would like to assign the exam to by clicking in the small circle on the far left of the row.
7. Scroll to the bottom of the page and click “Assign”
8. The exam will now be assigned to the chosen participant and you will see a message at the top of the page confirming this. Click “Close” at the bottom of the window to close the window.

Method 2 – using the “SEARCH” button to assign exam

1. Click on “Manage Keys” from the FIM Menu (Figure 17). The Manage Keys screen will appear

2. Select the facility you would like to assign exams for using the drop down list. You can also filter using any of the parameters available on the screen; e.g. Exam (key) ID, Status of the exam, Assigned status, Participant name, etc
3. Click “SEARCH” to display all the exams (unassigned and assigned) you have purchased.

A table will appear with a list of all exams you have purchased. Details for each exam key are displayed in rows. Details include Exam ID, Type of Exam (FIM or WeeFIM), Status (enabled, disabled, current (exam accessed, but not finalised)), Date Issued, Expiry Date, Purchaser, Facility, Date Assigned, Participant (assigned to), Exam Result and Attempts (number of times the exam has been taken).

4. On the far right of each row, there are two options:
 - VIEW – allows you to view the details for that individual exam, including the individual exam question answers.
 - Assign – allows you to assign the exam to a participant.

NOTE: If you cannot find the participant you wish to assign the exam to in the FIM system, it probably means that they are not ‘known’ to AROC. Contact AROC to arrange for this person to be ‘created’.

Emailing participants their assigned exams

Once you have finished assigning exams to participants, you can email them to let them know that they have been assigned an exam. To do this, follow these steps:

1. Highlight the row(s) of the participant(s) you would like to email by clicking on them. To unselect any of your choices, just click on the row again.
2. Click “Email Selected Exam Keys to Participants” at the top of the table.
3. An email template will appear, amend the template as you require.
4. Once you are happy with the email click “Send Emails”. A message will then be displayed confirming that the emails have been sent

Re-assigning exams

An exam can be re-assigned to another participant as long as the exam was **NOT ACTIVATED** by the original participant.

To re-assign an exam, follow these steps:

1. From the Manage Keys screen select the facility you would like to assign exams for using the drop down list.
2. Click SEARCH to display all the assigned exams you have purchased.

A table will appear with a list of all the assigned exams you have purchased.

3. On the far right of each row, there are two options:
 - VIEW – allows you to view the details for that individual exam, including the individual exam question answers.
 - Re-assign – allows you to re-assign the exam to a different participant.

My Exam Keys

A key must be purchased before sitting the FIM/WeeFIM online exam (refer to Online Store on page 17). Keys can be purchased by:

- An individual FIM/WeeFIM clinician, or
- A Facility Trainer on behalf of staff at their facility.

Exam keys have a life of 6 months from the date of purchase. If an exam key is not used within 6 months it will become invalid and appear as an Expired Key in the FIM system. An email is automatically generated one month prior to exam key expiry to remind the purchaser and person the key is assigned to (if they are different) that it expires in one month.

Facility Trainers who purchase exam keys on behalf of their workshop participants are responsible for assigning each key to an individual. Assignment is automatic if a single exam key was purchased by an individual. Once a key is assigned to an individual they will be able to 'see' this key in My Keys.

Exam keys require activation before the exam can be accessed. The individual to whom the key has been assigned is responsible for activation of the key. Once activated, the key must be used within 1 month or it will become invalid and appear as an Expired Key in the FIM system.

Flow for lifespan of a FIM/WeeFIM exam key

Figure 22 provides a visual guide to the lifespan of a FIM/WeeFIM exam key.

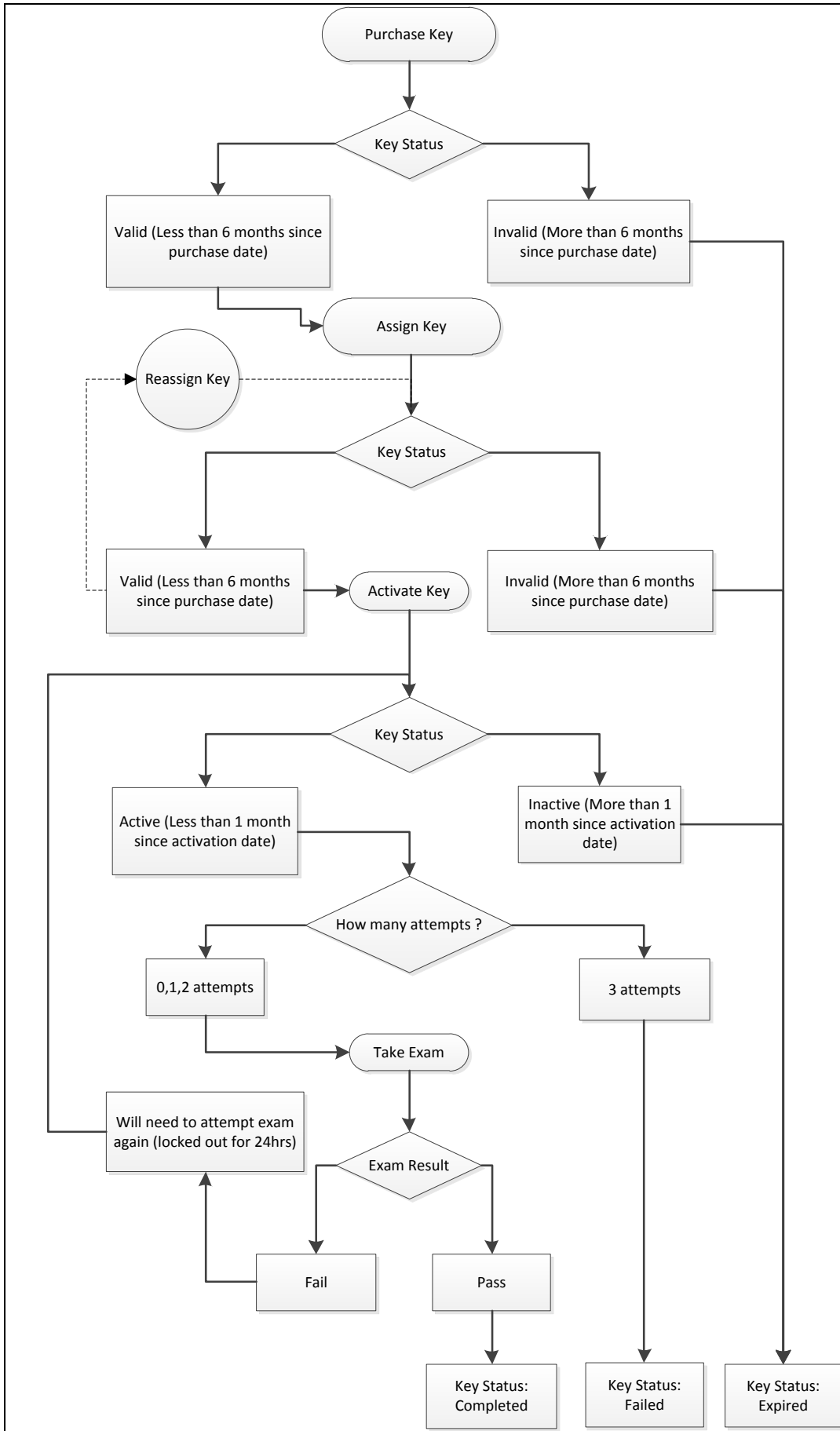


Figure 22: Lifespan of a FIM/WeeFIM exam key

The FIM and WeeFIM Online Refresher Course

If you have been previously credentialed in FIM/WeeFIM and need to undertake a Refresher Workshop (required every 4 years for both FIM/WeeFIM clinicians and Facility Trainers), instead of attending a whole day face to face workshop you can now access the FIM/WeeFIM Online refresher course.

To access and complete the course follow these steps:

- 1) Purchase an online FIM or WeeFIM Refresher Course key from the Online Store (page 17) – examples here refer to the completion of the FIM Refresher Course
- 2) Click on “Activate” (Figure 23)

My Keys							
Facility	Product	Purchaser	Participant	Status	Expiry	Result	Actions
Wollongong Hospital	FIM Exam + Refresher	FIM Clinician	FIM Clinician (1400412C)	Assigned	17/12/2014		Activate

Figure 23: My Keys - Activate

- 3) Click on “Go to activity” (Figure 24)

My Keys							
The key has successfully been activated.							
Facility	Product	Purchaser	Participant	Status	Expiry	Result	Actions
Wollongong Hospital	FIM Exam + Refresher	FIM Clinician	FIM Clinician (1400412C)	Activated	26/07/2014		Go to activity

Figure 24: My Keys - Go to activity

- 4) Click on FIM Refresher Course (Figure 25)

AROC | HOME | MY ACTIVITIES | MY REPORTS | CALENDAR | EXIT LEARNING SYSTEM

Home > My courses > FIM > FIMQ


FIM Qualification Activity

FIM Refresher Course

Click on the link below to view the FIM Refresher.

This will take you through to an interactive course that explains each of the FIM items and how to score them.

Once you complete the FIM Refresher, you are then able to attempt the FIM Examination.

 [FIM Refresher Course](#) ←

FIM Exam

Click on the link below to access the FIM Examination.

In this exam, two FIM case studies will be selected at random. In each case study you must score each FIM item.

You have 3 attempts to pass the exam, and may only attempt the exam once every 24 hours.


 [FIM Exam](#)

Figure 25: Starting the FIM Refresher Course

5) When the Welcome Page appears, click on Enter (Figure 26)

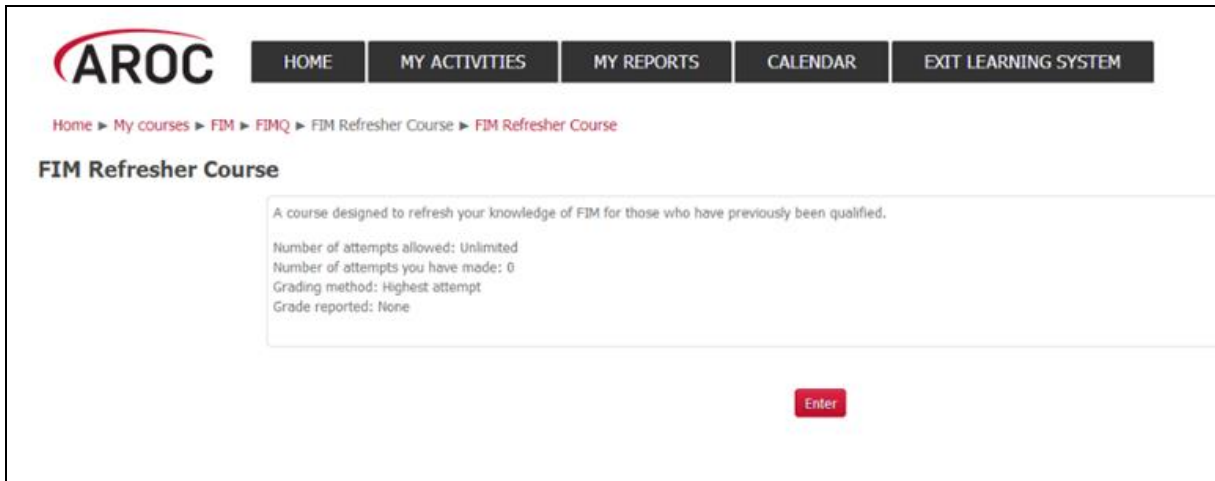


Figure 26: Entering the FIM Refresher Course

6) This takes you to the front page of the FIM or WeeFIM Refresher Course (Figure 27)



Figure 27: Front Page of the FIM Refresher Course

7) Select Start Module to begin, this will take you to the introduction page of the FIM refresher course (Figure 28)

FIM REFRESHER

Introduction

Welcome

Welcome to the Functional Independence Measure (FIM) Refresher E-learning Module.

This module is designed to help **REFRESH** your understanding of the 18 FIM Items. It assumes you already have significant knowledge of FIM, both theoretical and practical, and therefore does not cover all aspects of each item. Each item contains a definition, overview and a quiz section to ensure that you are scoring the FIM accurately and to help you prepare for the online FIM exam.

As you work through the module, you should have the FIM Training Manual with you for reference.

The module should take you approximately **45 - 60 minutes** to complete. You can work through the FIM items in any order. You can close this module at any point and return at a later time (your progress will be saved.)

The module contains a glossary of FIM terms. All words included in the glossary are underlined and if you hover over the underlined word the definition will appear.

1 of 4

Figure 28: Introduction Page of the FIM Refresher Course

Navigating in the FIM Refresher Course

- 1) When navigating in the FIM/WeeFIM Refresher course, many pages have blue menu items in the left column. On the bottom right of the page is the 'back' and 'forward' arrows. For each page, you must click through the blue menu items to see the content for that page, before clicking the 'forward' arrow to move to the next page.
- 2) When you have completed the introduction section you will reach the summary page. At this point the system will give you two options:
 - **'Continue to FIM Item 1: Eating'**: this allows you to jump straight into the course content for Eating. Using this option, you can follow the course in a sequential fashion, completing each item one at a time and stepping on to the next item.
 - **'Select an item from the main menu'**: this will take you to the course menu, which presents a list of the 18 FIM items and allows you to work through them in any order. You will still need to work through each of the 18 items to complete the refresher course, however this method has the benefit of allowing you to do the course in your own way.

Each item consists of a few pages of information, followed by a few questions. Please note that these questions are NOT THE FIM EXAM. There is no penalty for answering incorrectly here, the purpose is educational.

- 3) To answer the question, select the best option and click 'Submit' (as per the instruction on the screen). If you answer correctly, you will see a 'tick' and an explanation. If you answer incorrectly, you will see a 'cross' and an explanation of the correct answer. After you have reviewed the answer, click the 'forward' icon in the bottom right to move on.
- 4) Once you have completed your course, you will be directed back to AROC Learning System's FIM Qualification Activity screen. From here you can choose to go directly to complete your FIM/WeeFIM Exam or you can exit the system and come back to do your FIM Exam later (remembering that as your Exam Key is activated you only have 1 month before the key becomes invalid and expires).

Sitting the FIM/WeeFIM Exam

To become credentialed, or to recredential, a clinician must successfully complete an online examination.

The FIM/WeeFIM exam is an "open book" exam, which means that clinicians can refer to their FIM/WeeFIM Manuals whilst taking the exam. The exam is designed to test the knowledge of each individual, thus COLLABORATION is not allowed. Clinicians who collaborate will be identified automatically by the online FIM system, and be required to re-sit the exam under more stringent exam conditions and at their own expense.

The conditions under which the exam must be done are quite flexible and can be altered to suit the individual facility. The exam can be supervised in a group environment, where everyone does the exam at a computer in a teaching room, or clinicians can complete the exam online in their own time at work or at home.

To access and complete an exam, follow these steps:

- 1) Click on "MY EXAM KEYS" from the FIM Menu (Figure 29)

Note: If you have not already done so, click on "Activate" (Figure 23)

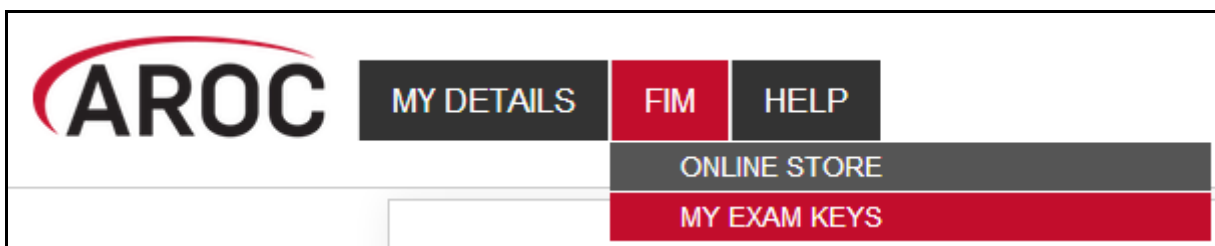


Figure 29: My exam keys

- 2) Click on “Go to activity” (Figure 24)
- 3) This will bring you to the AROC Learning System’s FIM Qualification Activity page where all your available courses can be seen (Figure 30). Click on “FIM Exam” to commence the exam.

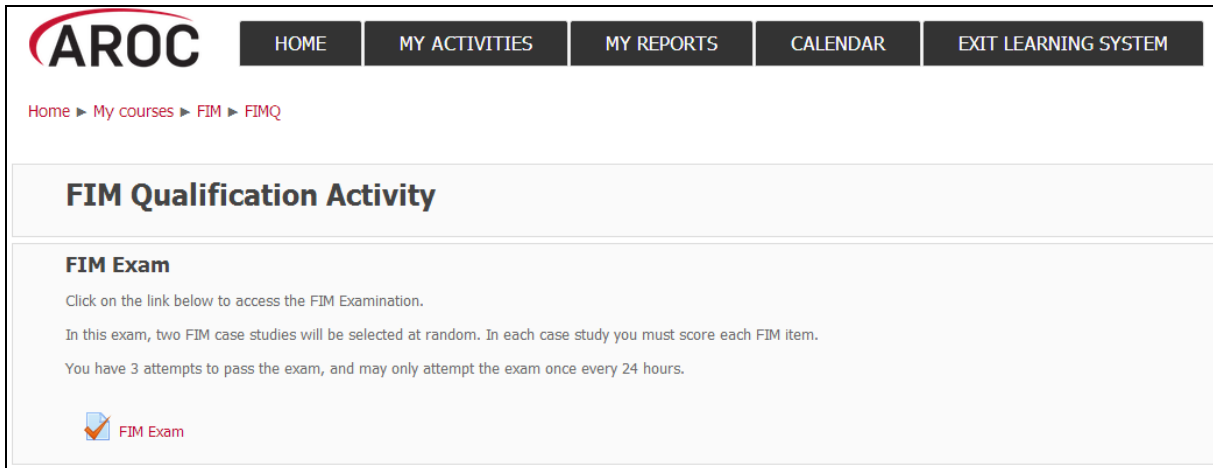


Figure 30: FIM Qualification Activity page

- 4) Click on “Attempt exam now”
- 5) A confirmation pop up box will appear. Click on “Start attempt” to start exam (Figure 31)

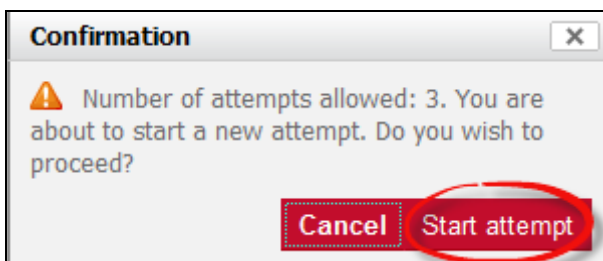


Figure 31: Confirmation pop up

The FIM/WeeFIM exam comprises of 2 randomly chosen case studies, each with 18 questions, one per FIM/WeeFIM item. You need to answer all 18 questions in each case study to complete the exam (Figure 32).

Figure 32: FIM Exam screen

- 6) Answer questions in exam by clicking on the FIM/WeeFIM score you choose for each question (Figure 73).

Pausing and resuming the online FIM/WeeFIM exam

- a) You can do part of the exam, then save and exit. After selecting “Save and Exit Attempt” on the left hand side of screen, you can leave AOS and your results will save, allowing you to return and complete the exam later.
- b) When you come back the system will know that you were part way through the exam and invite you to Resume Exam.

Completing the online FIM/WeeFIM exam

- 1) Once you have completed the exam click ‘Submit all and finish’ (Figure 33).
- 2) The system will mark your exam immediately. The next screen will show you how many answers you got correct. The example in Figure 34 shows a user getting only 3 of 36 questions correct ... so a failed attempt, and then two days later getting a perfect 36 out of 36. The pass mark for a FIM/WeeFIM clinician is 80% (or 29 of 36 questions).

If you fail you will be locked out of the exam for 24 hours. Clinicians should use this time to review their FIM/WeeFIM manual and seek help from their Facility Trainer before they re-sit the exam. Everyone has 3 attempts to pass the exam; each time the system will present 2 randomly chosen case studies to be answered. If you fail 3 times, the exam key will become invalid and to re-sit you will need to purchase another exam key. If you fail twice we recommend that you seek help and clarification about scoring the FIM/WeeFIM from your Facility Trainer or contact AROC for advice.

Figure 33: FIM Exam submission screen

Attempt	State	Grade / 36	Review	Feedback
1	Finished Submitted Wednesday, 27 August 2014, 11:20 AM	3	Not permitted	Failed
2	Finished Submitted Friday, 29 August 2014, 12:39 PM	36		Passed

Figure 34: FIM Exam Summary of Results

Your FIM/WeeFIM Credentialing Certificate

- 1) Once you pass your exam you are returned to the AROC Learning System's FIM Qualification Activity page where your FIM/WeeFIM certificate can be accessed (Figure 35). Click on FIM Certificate Complete to access your certificate; OR
- 2) Log into AOS with your FIM ID and select MY EXAM KEYS under the FIM drop down menu.
 - a. Click on "Go to activity" for the relevant exam key
 - b. Click on "MY ACTIVITIES"
 - c. Then click on "FIM Qualification"
 - d. Click on "FIM Certification Complete"
 - e. To get your certificate, click on "Get your certificate" (Figure 36).

Home » My courses » FIM » FIMQ

Your progress

FIM Qualification Activity

FIM Exam
Click on the link below to access the FIM Examination.
In this exam, two FIM case studies will be selected at random. In each case study you must score each FIM item.
You have 3 attempts to pass the exam, and may only attempt the exam once every 24 hours.

[FIM Exam](#)

FIM Certificate
Click on the link below to access your FIM Certificate.
Your certificate will also be emailed to you.

[FIM Certification Complete](#)

Figure 35: Generating the credentialing certificate

Home » My courses » FIM » FIMQ » FIM Certificate » FIM Certification Complete

Summary of Previously Received Certificates

Issued	Grade
Wednesday, 27 August 2014, 11:21 AM	Course Grade: 100.00 %

Click the button below and your certificate will be sent to you as an email attachment.

[Get your certificate](#)

Figure 36: Notification of Certificate

AROC
australasian rehabilitation
outcomes centre

FIM CREDENTIALING

This is to certify that

Sample Clinician

has attained the status of FIM Clinician

with FIM examination result of 100%

FIM ID: 14004160
Certification issued: August 27, 2014
Accreditation current until: August 27, 2016

J.E. Marosszeky
Assoc. Professor J.E. (Ben) Marosszeky
Clinical Director, AROC

Figure 37: Example copy of FIM Certificate

FIM/WeeFIM credentialing reports (facility trainers only)

Generating a credentialing report in AOS

Facility Trainers can access a FIM/WeeFIM Credentialing Report for facilities they are attached to.

Click “FIM Reports” – an option under the “FIM” button.

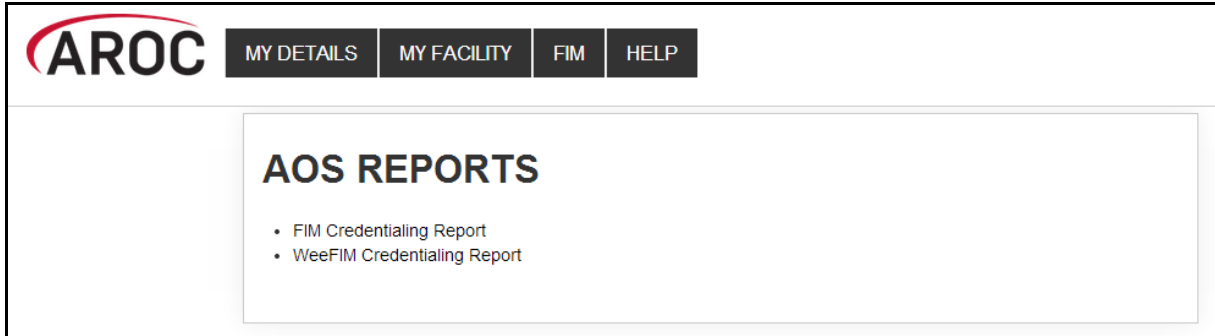


Figure 38: FIM Credentialing reports

Choose either FIM or WeeFIM Credentialing Report (Figure 38).

Choose the facility(s) for whom you wish to run a report (Figure 39). Most Facility Trainers are only attached to a single facility, so just this facility will be available to choose.

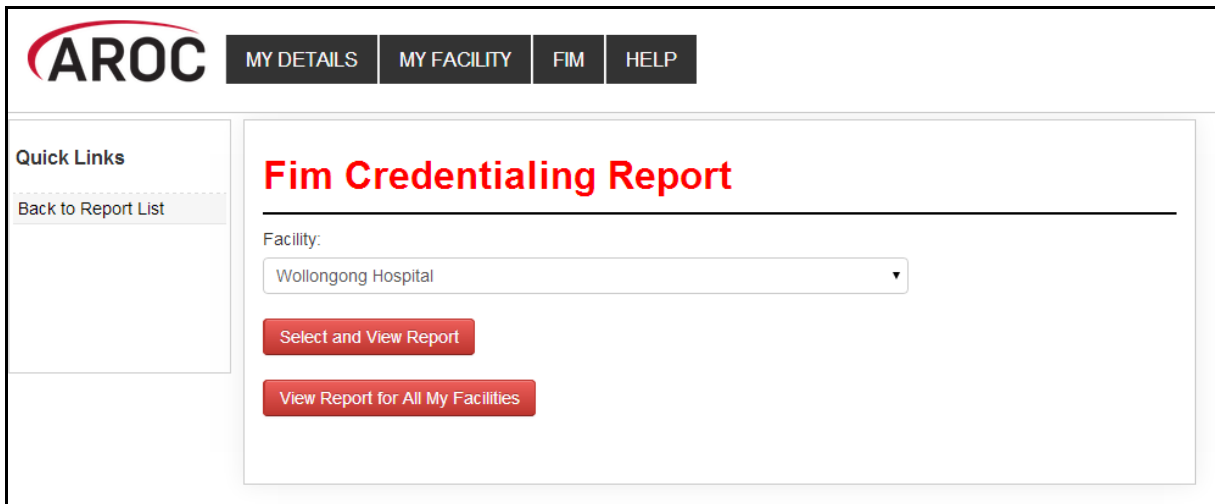


Figure 39: FIM Facility selection

Click “Select and View Report”. Note, Facility Trainers attached to more than one facility can choose “View Report for All My Facilities” or they can run a report for a single facility.

Once the report is generated you can use the export button (blue floppy disk with a green arrow) to save the report to your computer in your choice of format (Figure 40).

The screenshot shows the AROC AOS Report Viewer interface. At the top, there are navigation tabs: MY DETAILS, MY FACILITY, FIM, and HELP. The main content area is titled "AOS Report Viewer" and displays a "FIM Credentialing Status Report" for "Wollongong Hospital". The report shows a table of "FIM NotAccredited" users. A context menu is open over the table, offering export options: XML file with report data, CSV (comma delimited), PDF, MHTML (web archive), Excel, TIFF file, and Word. The table data is as follows:

Name	FIM ID	Qualification	Accredited	Accredited by	Version	Expiry
Clinician, Example	1400418K	NotAccredited				
Clinician, FIM	1400412C	NotAccredited	Not Accredited			
Trainer, Facility	1400411T	NotAccredited	Not Accredited			

Below the table, it states: "Total number of credentialed NotAccredited(s) at Wollongong Hospital: 3". At the bottom of the report, it says "FIM FacilityTrainer".

Figure 40: FIM Report export

FIM/WeeFIM Workshops

Types of FIM/WeeFIM Training Workshops

AROC offers several types of workshops:

- FIM/WeeFIM training workshop hosted by a facility (for staff from the facility hosting the workshop)
- FIM/WeeFIM training workshop hosted by AROC (Master Trainer)
- FIM Facility Trainers Workshop Hosted by AROC (Master Trainer)

FIM/WeeFIM training workshop hosted by a facility

This type of workshop is held at a facility for staff from that facility. It is for clinicians who have not used the FIM/WeeFIM assessment measure before, or who have limited knowledge of the assessment. Clinicians can attend this workshop and then sit the FIM/WeeFIM online exam to become credentialed FIM/WeeFIM users. It can be run by either a Facility Trainer or AROC Master Trainer. FIM/WeeFIM workshops usually commence at 9:00 am and conclude at 16.00 pm.

Recommended class size:

- If workshop is being conducted by a single Facility Trainer, we recommend that classes should not exceed 12 participants.
- If workshop is being conducted by 2 Facility Trainers together, we recommend that classes should not exceed 20 participants.
- If workshop is being conducted by a Master FIM Trainer, we recommend that classes should not exceed 20 participants.

If you require a Master Trainer to conduct a workshop at your facility, please contact AROC and not the Master Trainers themselves.

AROC will organise the Master Trainer workshop. Please complete a workshop request form <http://ahsri.uow.edu.au/content/groups/public/@web/@chsd/@aroc/documents/doc/uow094426.pdf> and email (fim@uow.edu.au) or fax (02 4221 4679) it to the FIM manager.

Once we have received your request, we will proceed with the organisation of the workshop i.e. organising dates and resources. From this point forward it is up to the facility to provide the equipment needed for training i.e. overhead projector, screen, laptop with USB port and catering. AROC will email the facility with a list of equipment required.

FIM/WeeFIM training workshop hosted by AROC

Commonly referred to as an Open FIM/WeeFIM workshop, this is the same in content as a workshop hosted by a facility (see above). The difference is that it is conducted at a venue other than a facility, is organised by AROC and conducted by an AROC Master Trainer. People from many different facilities can attend this workshop. FIM/WeeFIM workshops usually commence at 9:00 am and conclude at 16.00 pm and cater for a maximum of 20 participants.

FIM Facility Trainers Workshop Hosted by AROC

This type of workshop is for clinicians who meet the criteria to become a Facility Trainer and can only be conducted by an AROC Master FIM Trainer. The aim of this workshop is to train and equip clinicians with the skills needed to train other staff at their facility in the use of the FIM assessment. Before sending clinicians, employers/ supervisors should be aware of the criteria and ensure that the clinician is proficient in the FIM, is willing to present items at the workshop and is prepared to conduct FIM training at their facility on their return. Facility Trainer workshops usually commence at 9:00 am and conclude at 16.00 pm, and cater for a maximum of 10 participants.

Organising or attending a workshop

To organise or attend a workshop, simply download the workshop request form from the AROC website <http://ahsri.uow.edu.au/aroc/index.html> and email (fim@uow.edu.au) or fax (02 4221 4679) it to the FIM manager. Alternatively you can contact the FIM Manager on fim@uow.edu.au who will be happy to help you.

All open workshops will be advertised on our website and in our quarterly newsletter, Data Matters. Once your place in the open workshop has been confirmed, transport and accommodation (if required) is your own responsibility.

Cost of workshops

The structure is designed so that it is more economical for hospitals to have workshops run at their facility rather than sending them to an AROC OPEN Workshop. This is true for a facility if they have 8 or more people to train. The great thing about the trainer coming to your facility is that you can have up to 20 people trained for that flat rate, provided the venue can hold the numbers comfortably. For further pricing details please see Table 5.

Table 5 FIM/WeeFIM Workshop Expenses for AROC Members

	FIM/WeeFIM Workshop Hosted by Facility	FIM /WeeFIM Workshop Hosted by AROC	FIM Facility Trainer Workshop Hosted by Facility	FIM Facility Trainer Workshop Hosted by AROC
Weekday workshop	\$1300 (\$2600 Non AROC Member)	\$160/person	\$1300 (\$2600 Non AROC Member)	\$160
Resources	\$25/manual	\$25/manual	\$35/manual	\$35/manual
Trainer's expenses	Travel /Car Hire/Km's/Travel Time Accommodation		Travel /Car Hire/Km's/Travel Time Accommodation	
Participant expenses		Travel /Car Hire/Km's/ Accommodation – if required		Travel /Car Hire/Km's/ Accommodation – if required

NB: The above fees do not include GST. This must be added to the total cost. Also note that these expenses only apply when a master trainer has been requested to run the workshop.

Non members of AROC should contact AROC for the relevant charges.

Checklists

Check List for Facility Trainers Running Workshops at their own facility

1. Determine date of workshop
2. Book venue
3. Advertise workshop within facility and register interested people
4. Complete a registered FIM ID form and forward to AROC at least 2 weeks prior to your workshop – AROC will assign FIM ID's to those participants that don't already have one
5. Log in to THE NEW FIM SYSTEM and order any FIM/WeeFIM manuals you need (allow 2 weeks for delivery)
6. Log in to THE NEW FIM SYSTEM and purchase exams for workshop participants. Upon receipt log in to THE NEW FIM SYSTEM and assign each participant an exam.
7. Print the attendance sheet and evaluation forms for use at the workshop; these can be found on your CD of presentation slides along with other useful documents.
8. The day after the workshop send the completed attendance sheet and evaluation forms to AROC by fax, or scan and email fim@uow.edu.au

Check List for Facility Trainers Requesting a Master Trainer Workshop at their Facility

1. Complete a workshop request form providing dates that may be suitable for training at your facility. Where possible we will try to accommodate your requested dates: <http://ahsri.uow.edu.au/content/groups/public/@web/@chsd/@aroc/documents/doc/uow094426.pdf>
2. The date of workshop will be confirmed by email and you will be provided with a list of equipment and other requirements for training
3. Complete a FIM ID form for registered participants and forward to AROC at least 2 weeks prior to your workshop – AROC will create FIM ID's to those participants that don't already have one

4. Log in to THE NEW FIM SYSTEM and order any FIM/WeeFIM manuals you need (allow 2 weeks for delivery)
5. Log in to THE NEW FIM SYSTEM and purchase exams for workshop participants. Upon receipt log in to THE NEW FIM SYSTEM and assign each participant an exam

Evaluation

AROC aims to continually improve the process of FIM/Wee/FIM Training and management. To aid this, evaluation forms are to be completed for all workshops conducted by a Master Trainer or Facility Trainer. It is very important that these are completed and sent to the FIM Manager at AROC. After AROC has received the forms they are entered into a database to be analysed so a report can be produced. Through this process it is hoped that any problem areas that are identified will be rectified. For this reason we ask that all people doing the FIM/WeeFIM training complete the evaluation forms.

Finance

Please contact the FIM Manager if you have any queries regarding financial matters. AROC sits within the Australian Health Services Research Institute (AHSRI) which in itself sits within the University of Wollongong. AHSRI therefore utilizes the University's financial infrastructure.

Workshop billing will occur at the time of registering for an AROC hosted workshop. For a facility hosting an on site workshop billing will occur once all expenses are finalised.

Should your facility require an invoice, you will first need to provide AROC with a copy of a valid purchase order number generated by the finance department of your organisation.

If you require any more information, please contact the AROC team at fim@uow.edu.au