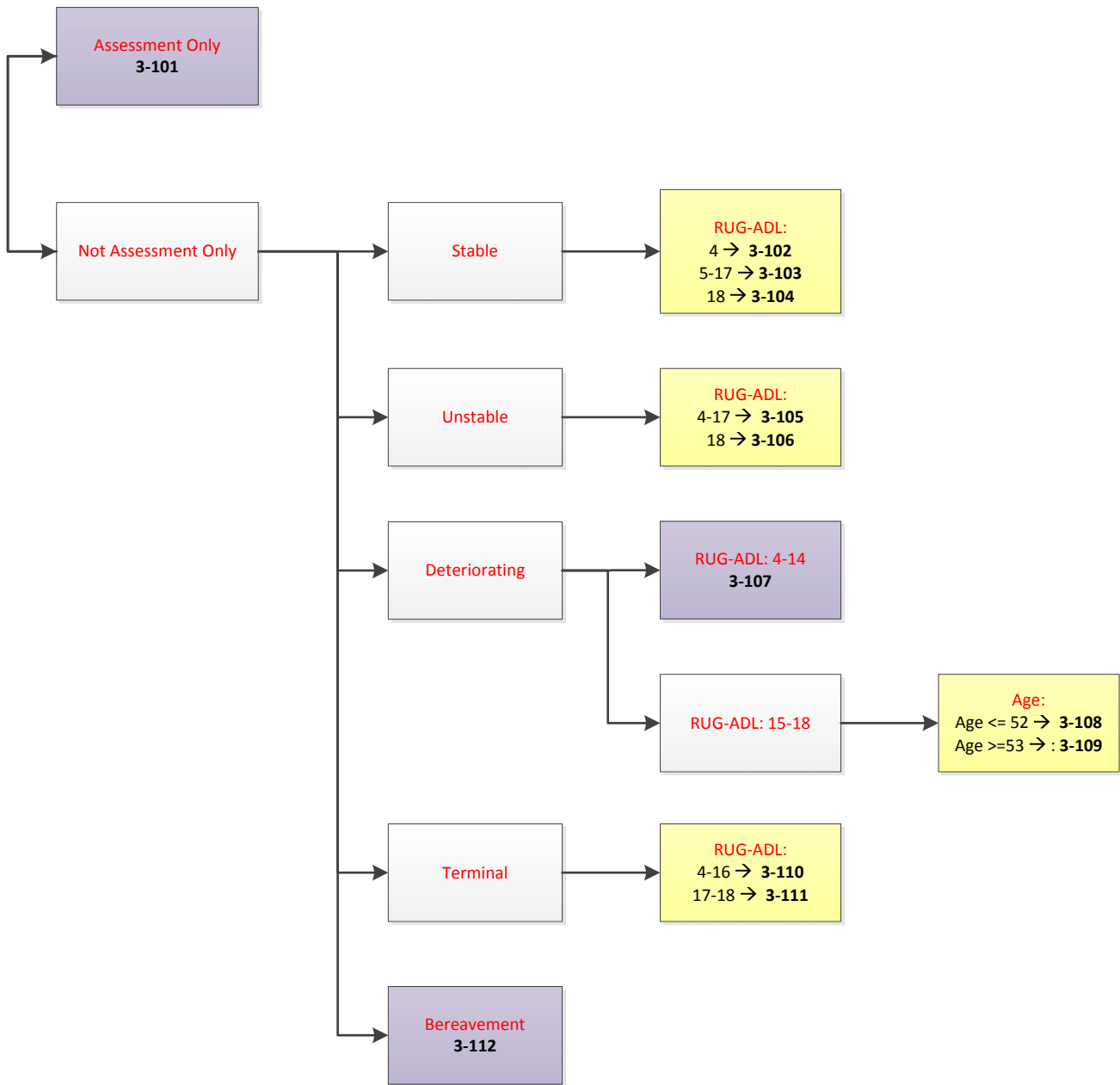


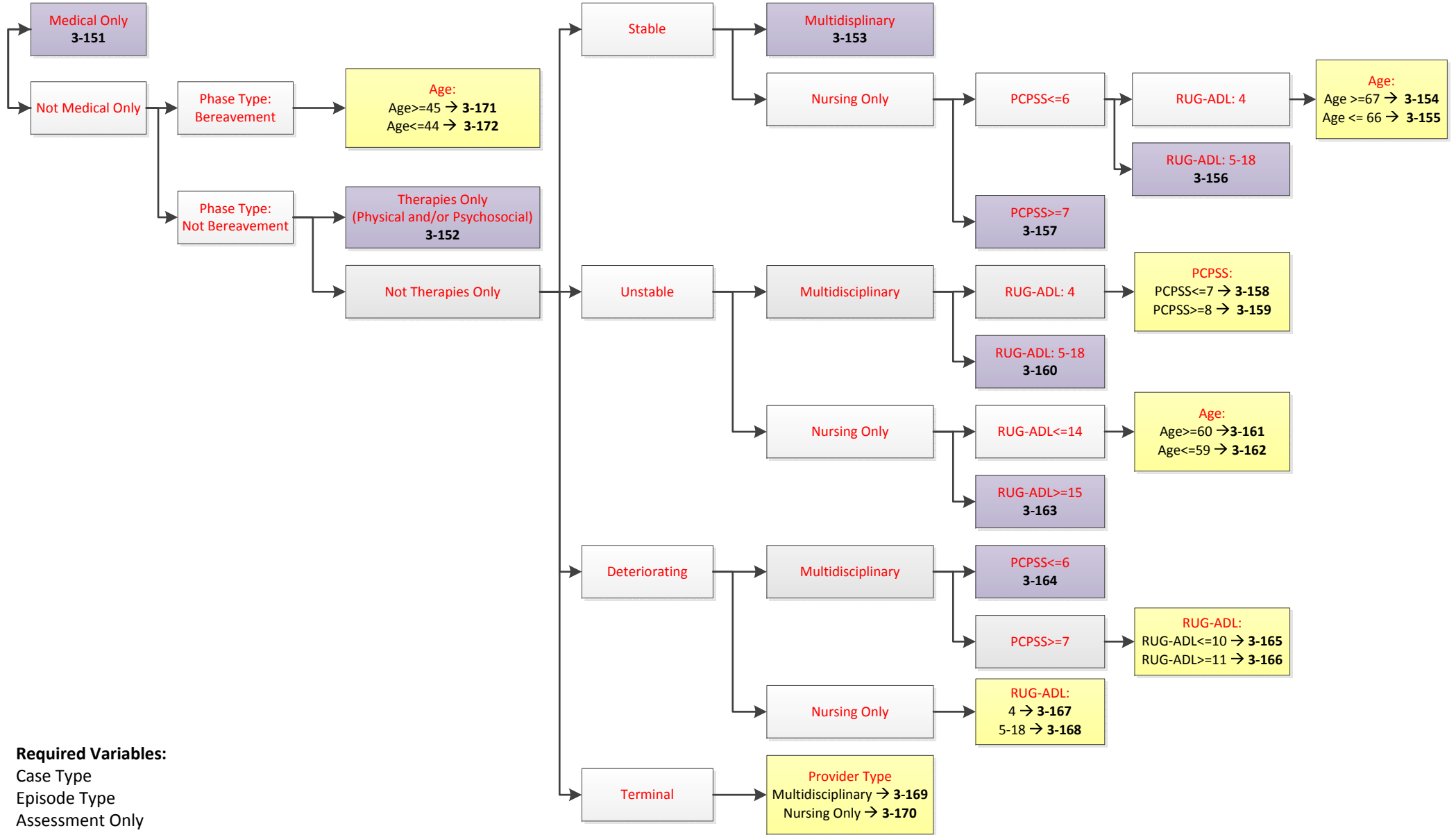
Palliative Care: Overnight



Required Variables:

Case Type
Episode Type
Assessment Only
Phase Type
Age
RUG-ADL

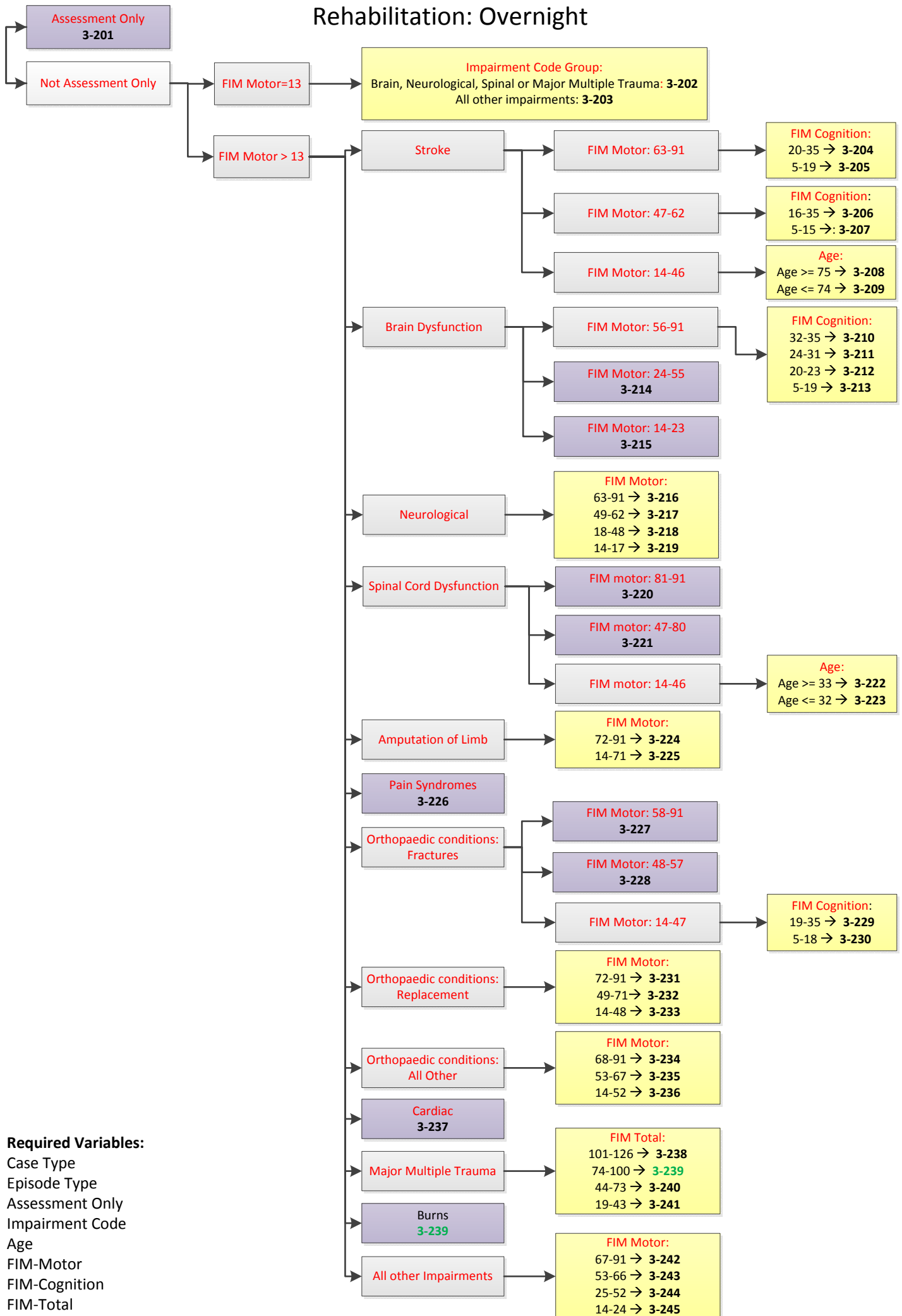
Palliative Care: All Ambulatory (Same Day, Outpatient, Community)



Required Variables:

- Case Type
- Episode Type
- Assessment Only
- Phase Type
- Age
- RUG-ADL
- PCPSS
- Provider Flags

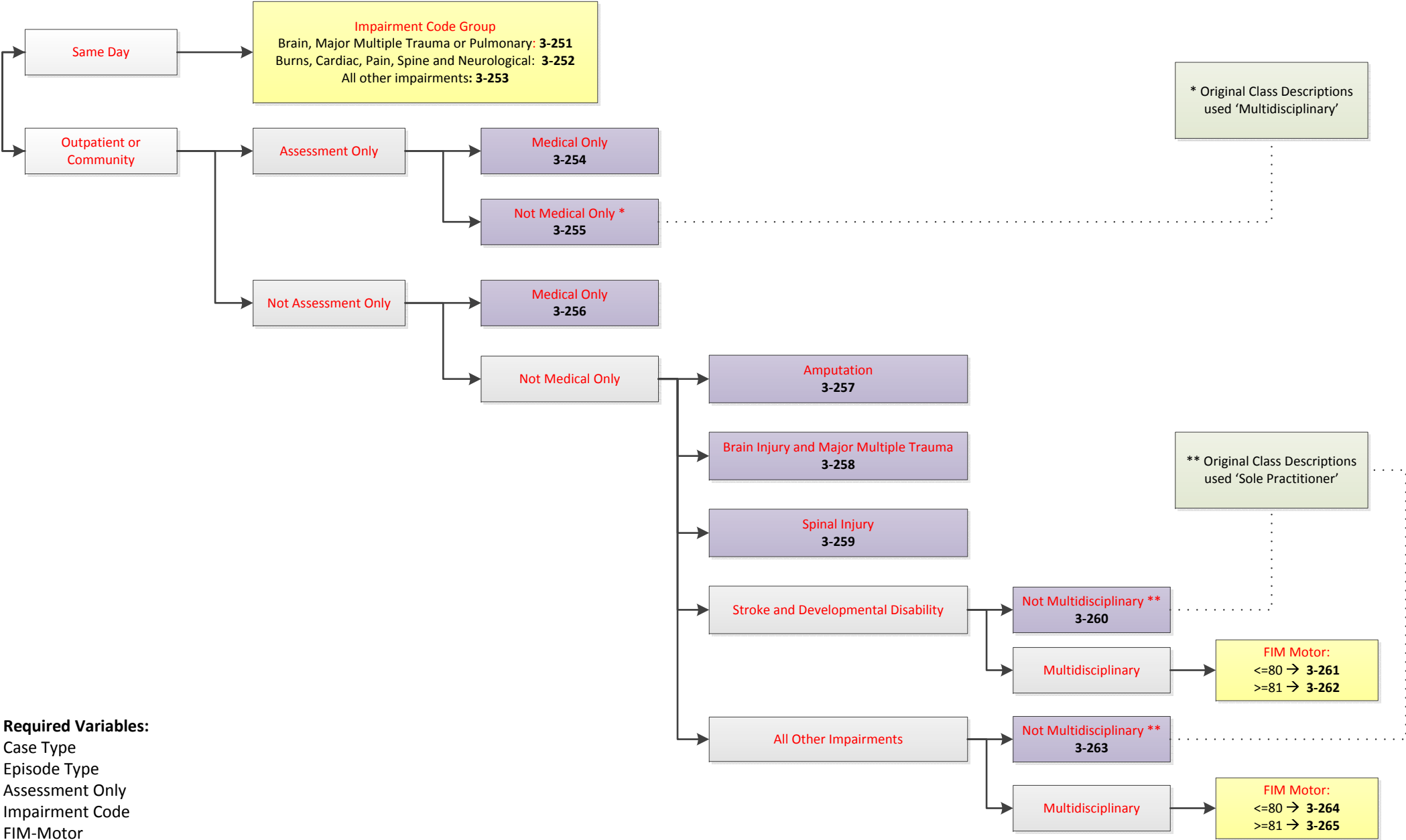
Rehabilitation: Overnight



Required Variables:

- Case Type
- Episode Type
- Assessment Only
- Impairment Code
- Age
- FIM-Motor
- FIM-Cognition
- FIM-Total

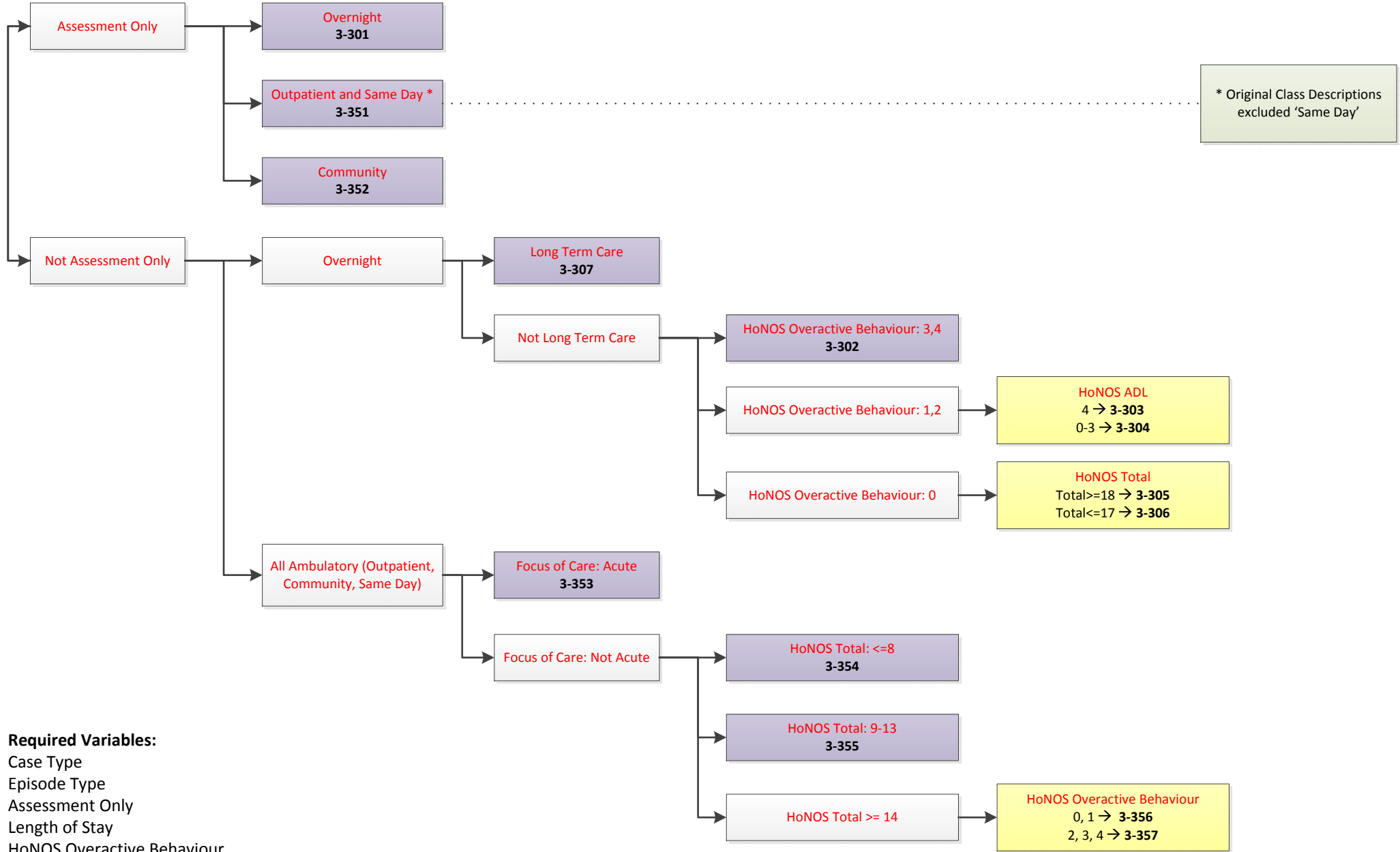
Rehabilitation: All Ambulatory



Required Variables:

- Case Type
- Episode Type
- Assessment Only
- Impairment Code
- FIM-Motor
- FIM-Cognition
- FIM-Total
- Provider Flags

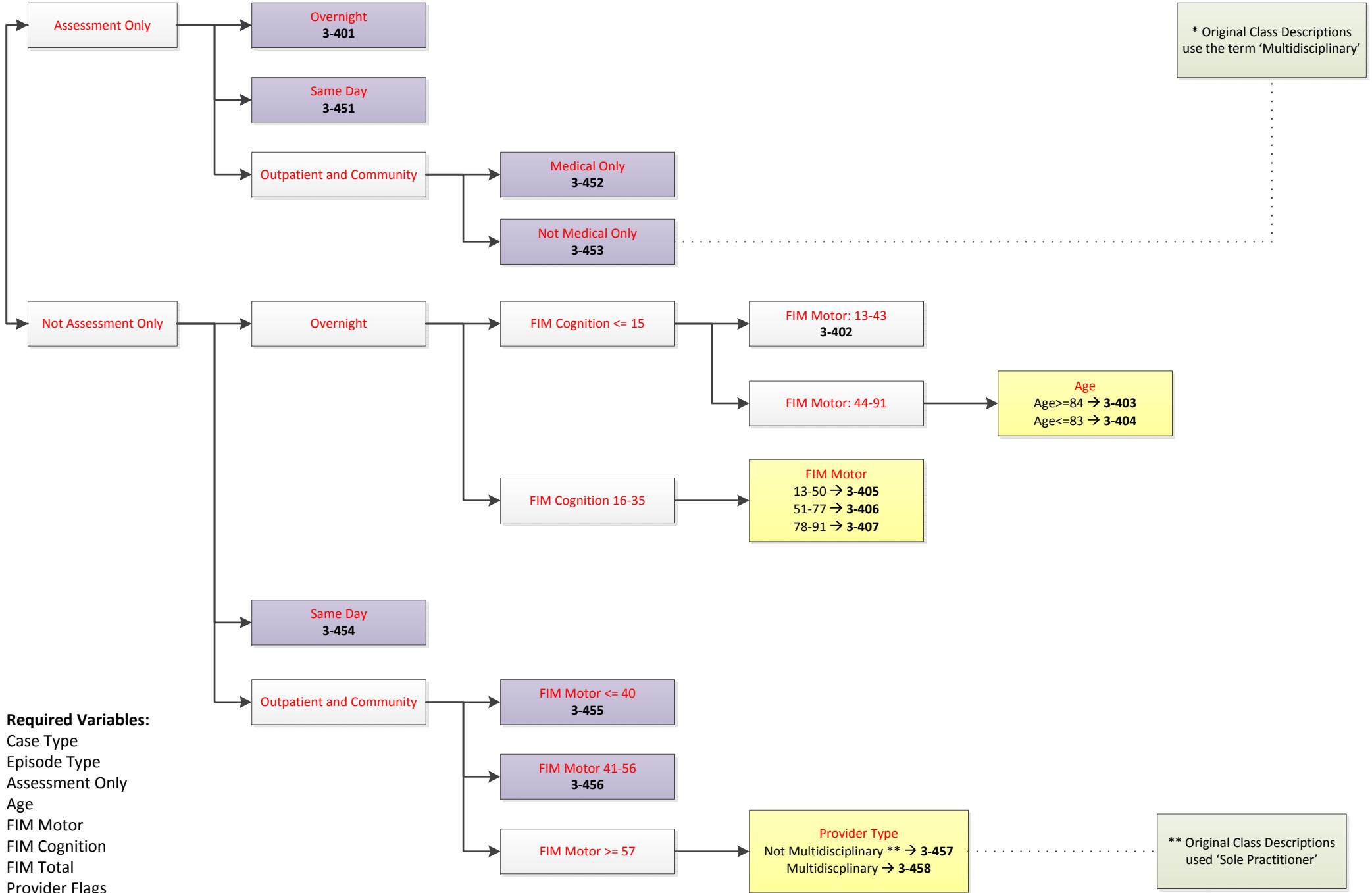
Psychogeriatric: Overnight and All Ambulatory



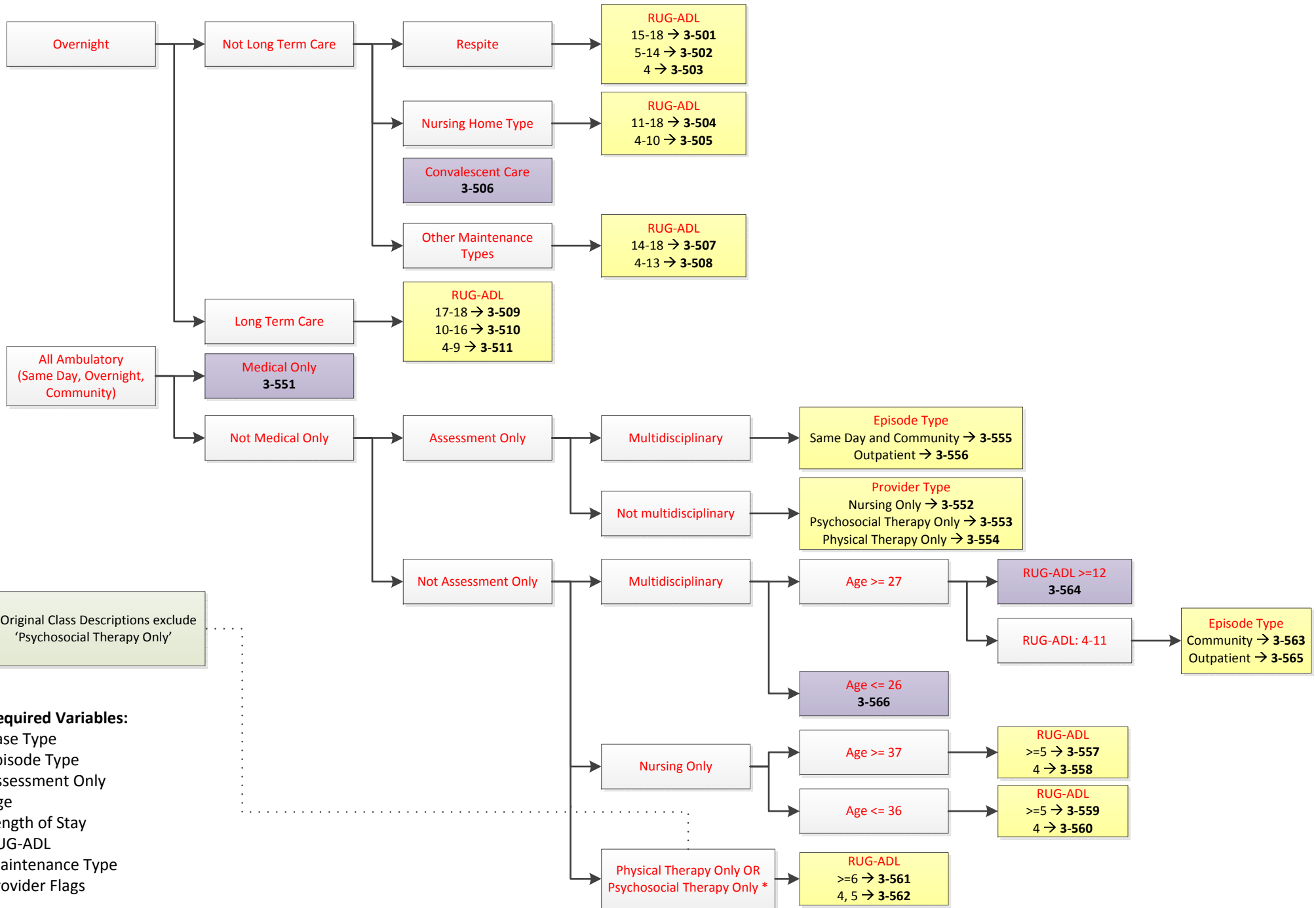
Required Variables:

- Case Type
- Episode Type
- Assessment Only
- Length of Stay
- HoNOS Overactive Behaviour
- HoNOS ADL
- HoNOS Total
- Focus of Care

GEM: Overnight and All Ambulatory



Maintenance: Overnight and All Ambulatory



* Original Class Descriptions exclude 'Psychosocial Therapy Only'

Required Variables:

- Case Type
- Episode Type
- Assessment Only
- Age
- Length of Stay
- RUG-ADL
- Maintenance Type
- Provider Flags